

# Why BronchoSampler?

## Ambu® aScope™ BronchoSampler

The closed-loop system for simplified sampling

### Protect Healthcare Personnel

- Minimizes risk of exposure to airway secretions from patient
- Reduces time spent in patient room with simplified sampling process
- Limits the need for clinical support staff with a single-user concept

Watch the video to learn more about BronchoSampler and clinician safety in the time of COVID-19. Scan the QR code or visit:

[www.ambuusa.com/bronchosamplervideo](http://www.ambuusa.com/bronchosamplervideo)

- Reduced risk of sample loss
- Single operator sampling solution
- Vacuum bypass to eliminate suction tube switch



# Specifications

Suction Connector <sup>1</sup>	
Connecting tube with female interface	ID = Ø7 ± 1 mm
Connecting tube with male interface	OD = Ø7 ± 1 mm
<i>Applicable when suction adapter is used</i>	
1. Please check for compatibility with suction tubing before use	
Sample Container	
Sample Container volume	30 ml
Storage and Transportation	
Storage and transportation temperature	10-40° C (50-104 ° F)
Operating Environment	
Temperature	10-40° C (50-104 ° F)
Sterilization	
Method of sterilization	ETO



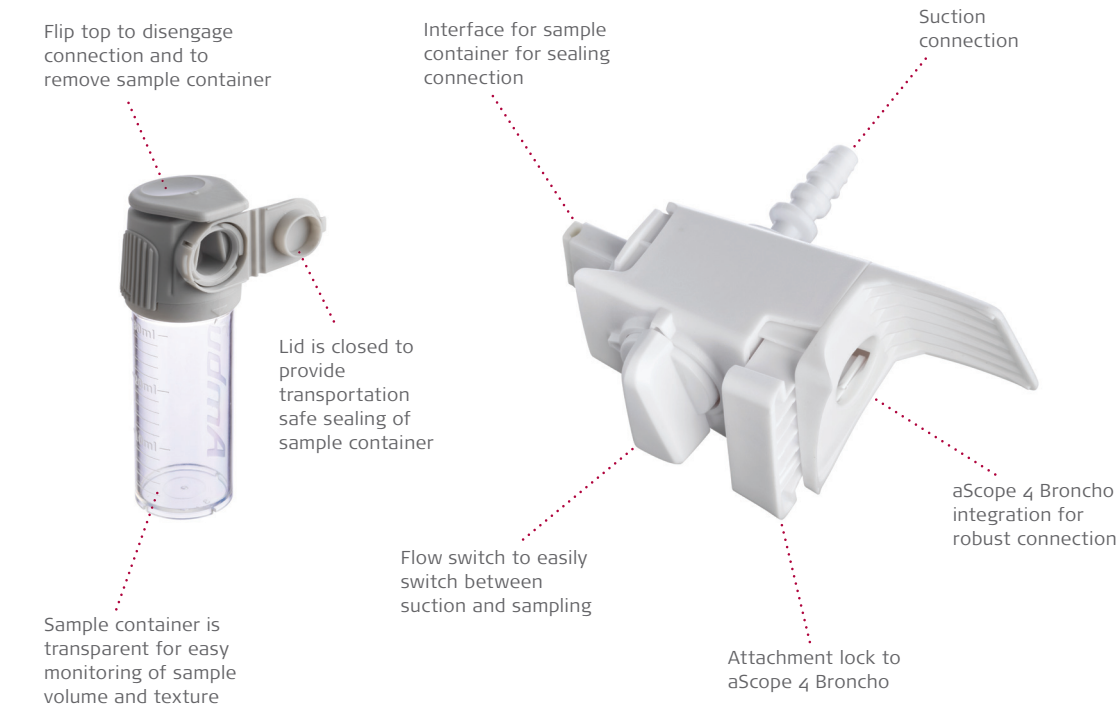
Switch from suctioning to sampling by the flip of a switch

# Ordering specifications

Item No.	Item Description	Quantity
480200000	aScope BronchoSampler, specimen sampling system	5
480300000	aScope BronchoSampler SC, sample container	10



Easily close lid to seal retrieved sample



**Ambu USA**  
6230 Old Dobbin Lane  
Columbia, MD 21045  
Tel. 800 262-8462  
Fax 800 262-8673  
ambuUSA.com



US: Rx only