

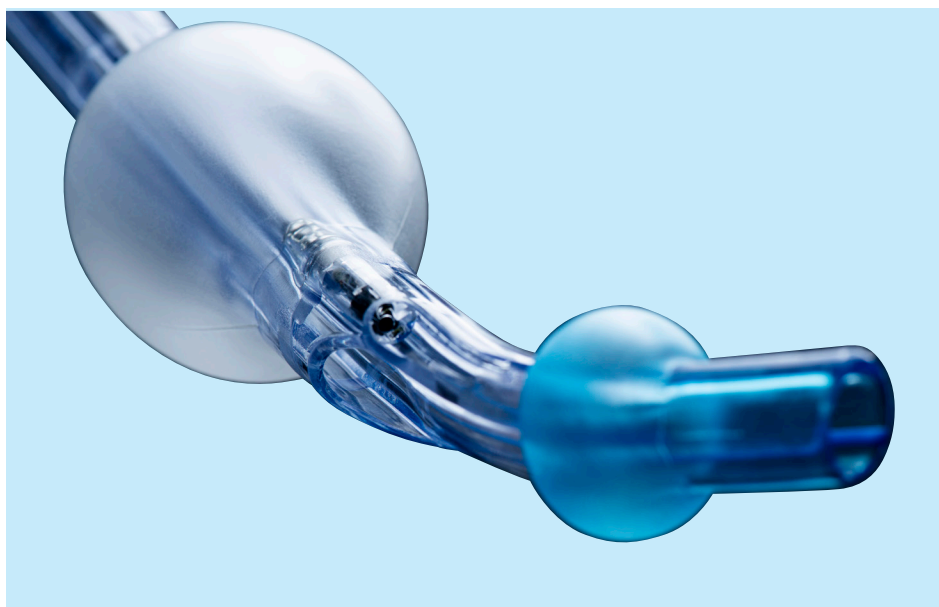


Ambu

**TURN THE
LIGHTS ON WITH
VIVASIGHT™ 2 DLT**



TURN THE LIGHTS ON WITH VIVASIGHT 2 DLT



Ambu® VivaSight™ 2 DLT offers a safe and cost effective way to perform One-Lung Ventilation (OLV) with a single-use solution. It provides continuous visualization of the patient airway on the full-HD Ambu® aView™ 2 Advance monitor.

Why work in the dark?

Although similar to the conventional DLTs you are familiar with, VivaSight 2 DLT has a built-in camera and light source at the tip of the tracheal lumen, which provides continuous visualization.

INCREASE PATIENT SAFETY WITH CONTINUOUS VISUALIZATION

VivaSight 2 DLT provides a clinical benefit and can increase patient safety because it enables you to follow tube placement and detect and correct tube malpositioning.



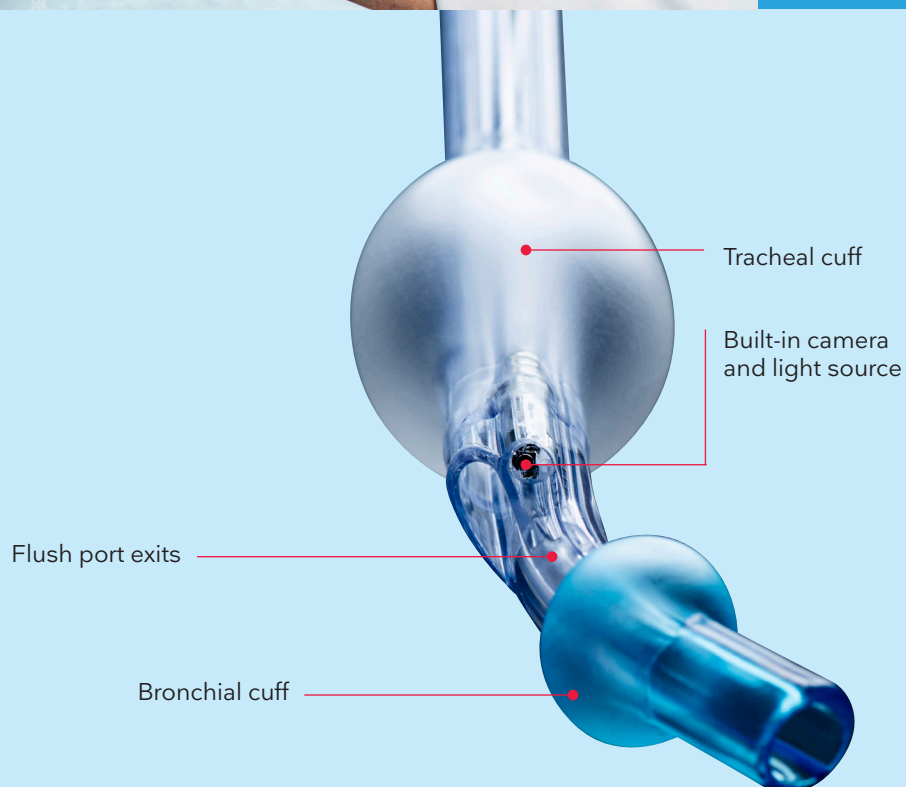
VivaSight 2

Follow placement –

Follow tube placement and monitor the patient airway throughout the entire procedure

Detect and correct –

Immediately detect and correct malpositioning and dislocation without compromising ventilation of the patient



Improve your procedure workflow

VivaSight 2 DLT

Clinical studies¹⁻⁴ show that continuous visualization of the tube can positively affect patient management and procedure workflow because it:

- Allows faster intubation time than conventional DLTs
- Facilitates correct tube placement
- Significantly reduces the use of a bronchoscope
- Allows immediate detection and correction of tube dislodgement



A COST-EFFECTIVE ALTERNATIVE FOR OLV

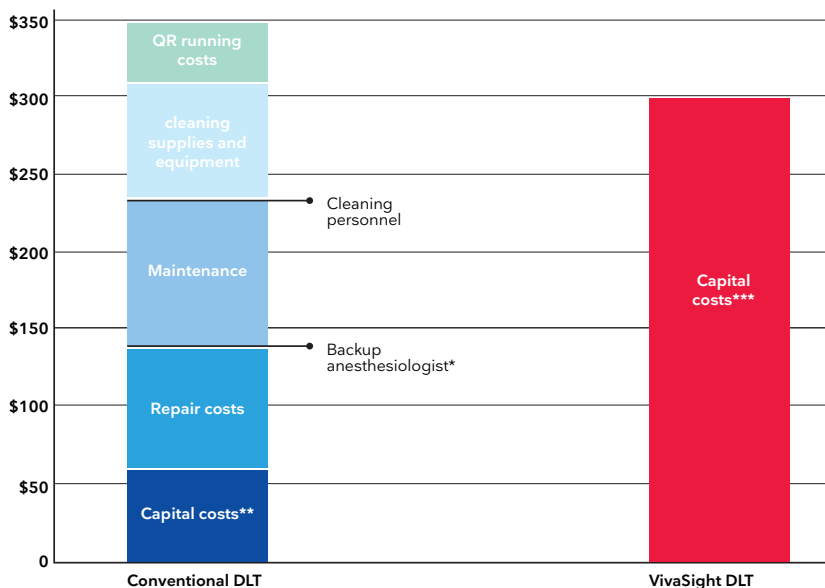
A health-economic study based on a randomized controlled trial from 2019 concluded that VivaSight DLT offers a cost-effective alternative for OLV procedures⁴. The study compared the costs and effects of a conventional DLT used in combination with a reusable bronchoscope to video-enabled DLT alone.



Study demonstrates potential savings of \$47.45 USD per procedure

According to the study, a video-enabled DLT (VivaSight) delivered incremental savings per OLV procedure of \$47.65 USD. This is equivalent to an annual saving of \$28,600 USD (assuming 600 annual procedures). Even when the number of annual OLV procedures (800, 1000, and 1200 [base-case 600]) is increased, VivaSight remains cost-effective.

VIVASIGHT™ REDUCES OVERALL COSTS



* The anesthesiologist spent 18 seconds on repositioning in the VivaSight-DL group and 520 seconds on repositioning in the control group

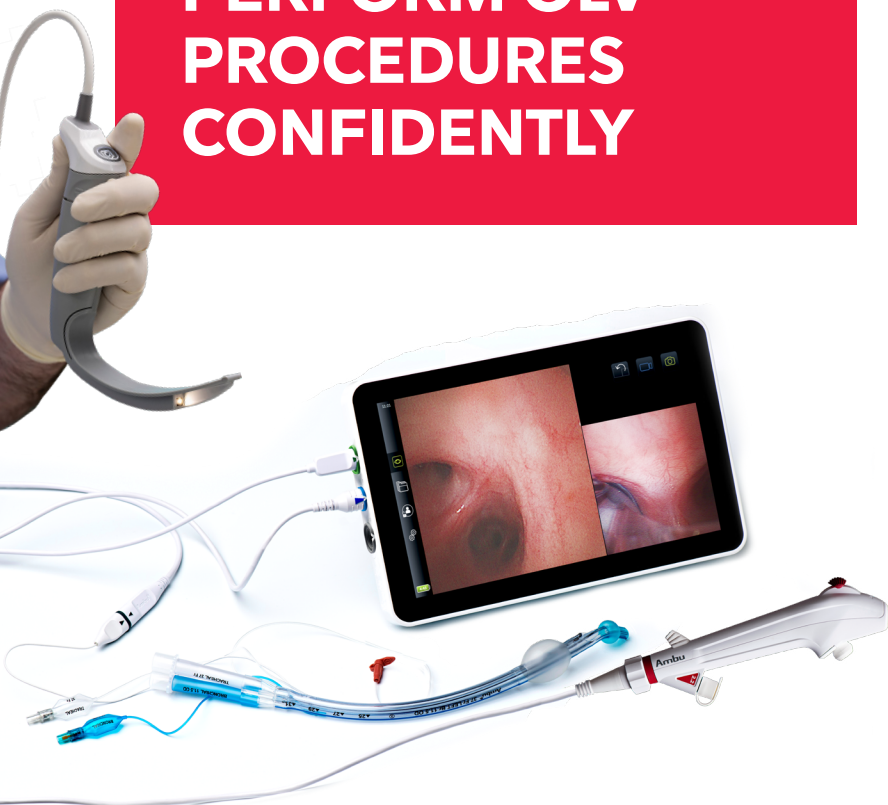
** Capital costs include reusable bronchoscope \$27.01 + disposable DLT \$ 35.41

*** Capital costs include VivaSight DLT \$299 + aView™ monitor \$0.94

References

1. Schuepbach R, et al. 2015 Intubation with VivaSight or conventional left-sided double-lumen tubes: a randomized trial. Can J Anaesth. 2015 Jul;62(7):762-9. doi: 10.1007/S12630-015-0329-8.
2. Levy-Faber D, et al. 2015 Comparison of VivaSight double-lumen tube with a conventional double lumen tube in adult patients undergoing video-assisted thoracoscopic surgery. Anaesthesia. 2015 Nov;70(11):1259-63.
3. Heir JS, et al. 2017 A Randomized Controlled Study of the Use of Video Double Lumen Endobronchial Tubes versus Double Lumen Endobronchial Tubes in Thoracic Surgery. Journal of Cardiothoracic and Vascular Anesthesia. <http://dx.doi.org/10.1053/j.jvca.2017.05.016>
4. Larsen et al. A Cost-Effectiveness Analysis Comparing the VivaSight Double-Lumen Tube to a Conventional Double-Lumen Tube in Adult Patients Undergoing Thoracic Surgery Involving One-Lung Ventilation. 2019 Pharmacoeconomics Open

A FULL PORTFOLIO TO HELP YOU PERFORM OLV PROCEDURES CONFIDENTLY



Ambu OLV portfolio

The comprehensive Ambu OLV portfolio arms you with a wide array of products to handle the various situations that can arise during the OLV procedures.

The portfolio consists of:

- Ambu VivaSight 2 DLT
- Ambu aScope™ 5 Broncho
- Ambu SureSight® Video Laryngoscope
- Ambu aView 2 Advance Full-HD Monitor with Dual View mode



Ambu® SureSight®
Video Laryngoscope



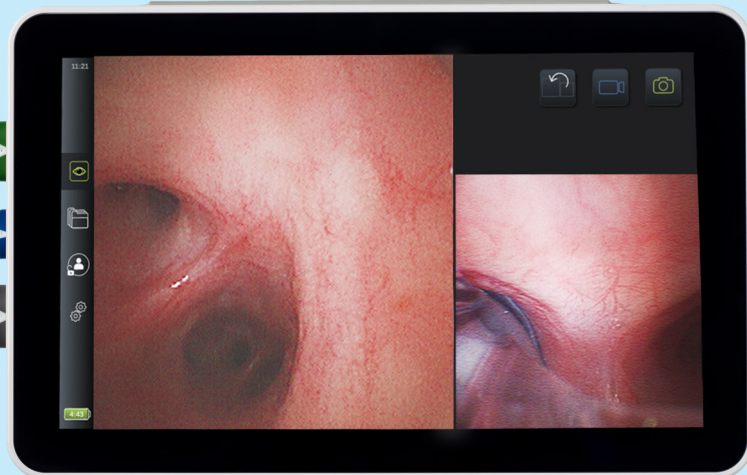
Ambu® VivaSight™ 2 DLT

Ambu® aScope™ 5
Broncho 2.7/1.2

Ambu® aScope™ 5
Broncho 4.2/2.2



Ambu® aView™ 2 Advance with Dual View



ORDERING SPECIFICATIONS

Item code	Product	Quantity
VivaSight 2		
412351000	Ambu® VivaSight™ 2 DLT Kit 35 Fr - LEFT	5
412371000	Ambu® VivaSight™ 2 DLT Kit 37 Fr - LEFT	5
412391000	Ambu® VivaSight™ 2 DLT Kit 39 Fr - LEFT	5
412411000	Ambu® VivaSight™ 2 DLT Kit 41 Fr - LEFT	5
SureSight		
390511000	Ambu® SureSight® Connect (US)	1
390331000	Ambu® SureSight® Blade MAC Size 3 (US)	10
390341000	Ambu® SureSight® Blade MAC Size 4 (US)	10
390231000	Ambu® SureSight® Blade Hyperangulated Size 3 (US)	10
390241000	Ambu® SureSight® Blade Hyperangulated Size 4 (US)	10
390531000	Ambu® SureSight® Blade Hyperangulated Size 3 Channeled (US)	10
aScope Broncho		
476101000	Ambu® aScope™ 4 Broncho Slim	5
620001000US	Ambu® aScope™ 5 Broncho 4.2/2.2	5
624001000US	Ambu® aScope™ 5 Broncho 2.7/1.2	5
Display Unit		
405011000US2	Ambu® aView™ 2 Advance Gen. 2 Displaying and Processing Unit	1

A HISTORY OF BREAKTHROUGH IDEAS

Ambu has been bringing the solutions of the future to life since 1937. Today, millions of patients and healthcare professionals worldwide depend on the efficiency, safety and performance of our single-use endoscopy, anesthesia, and patient monitoring & diagnostics solutions.

The manifestations of our efforts have ranged from early innovations like the Ambu® Bag™ resuscitator and the Ambu® BlueSensor™ electrodes to our newest landmark solutions like Ambu® aScope™ - the world's first single-use flexible endoscope. Moreover, we continuously look to the future with a commitment to deliver innovative quality products that have a positive impact on your work.

Headquartered near Copenhagen in Denmark, Ambu employs approximately 4,200 people in Europe, North America and the Asia Pacific.



Ambu, Inc.
6721 Columbia Gateway Drive
Suite 200
Columbia, MD 21045
Tel. 800 262 8462
Fax 800 262 8673
ambuusa.com



For more information,
please **Scan QR Code**
or visit ambuusa.com