

Ambu® RIPmate™ Disposable Inductance Belts

The single use respiratory belt.



Key Benefits

- Single use RIPmate inductance belts save time by eliminating the need to clean
- Every RIPmate belt is cut to length for a perfect fit
- No adjusting necessary- the Ripmate disposable belt grips tight to the patient and prevents loss of signal due to belt slipping
- Same quality signal you have come to love from RIPmate Reusable belts
- 1 year warranty on processors and cables



The Idea: Creating a single use Inductance Belt

Ambu Sleepmate RIPmate™ disposable inductance belts are cut to length for a perfect fit which ensures the belt will stay tight and in place on the patient throughout the duration of the study.



Our Work: Reliable respiratory effort signals every time

Ambu Sleepmate RIPmate™ Inductance Belts are designed for high sensitivity and patient comfort during measurement of chest and abdominal expansion associated with respiratory effort. Problems of signal loss due to lost belt tension and false paradoxical signals are eliminated.



Everyone's Life: Enabling you to provide the best care

For improved patient comfort, Ambu Sleepmate RIPmate™ belts are made from soft and flexible materials. Buckles and the fully encapsulated active elements are designed with rounded corners and flat profiles for further patient comfort.

Specifications

SYSTEM DESCRIPTION

The RIPmate™ Respiratory Effort Sensors collect data for thoracic and abdominal respiratory effort during sleep disorder studies, for recording onto a compatible physiologic recorder. The system measures inductance changes in the wire of the belt as it expands and contracts with breathing. This change is represented as voltage output from the sensor. The resulting data is both qualitative and quantitative when calibrated with a spirometer. The RIPmate™ system consists of a belt, a respiratory effort sensor that measures inductance changes in the belt and interfaces directly with a bipolar input on the recording device, and a cable that connects the sensor directly to the belt.

WARRANTY

Sleepmate Technologies warrants the RIPmate system to be free of defects in materials and workmanship as follows:

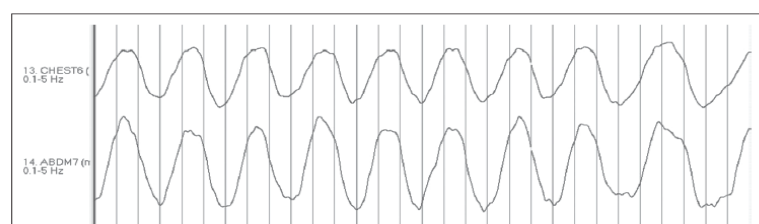
Processors	The warranty is effective for a period of twelve (12) months from the date purchased
Belts	The warranty is effective for a period of twelve (12) months from the date purchased

TECHNICAL SPECIFICATIONS

Lead wire	Two conductors, approximately 205 cm
Terminators	1.5 mm Safety pins (custom terminators available)
Belting systems	Disposable, cut to length
Low Frequency Filter/ Time constant	0.16 Hz (or 1 second or longer). Shorter time constants or higher low frequency filter settings will significantly attenuate waveforms
High Frequency Filter	8-15 Hz
Sensitivity	Adjustment of the sensitivity up or down is typically required. Response is dependent upon such variables as sensor application and patient effort
Width	1 Inch

Ordering Specifications

ITEM NO.	DESCRIPTION
819 200 100	RIPmate Kit w/ Disposable Bands - STD (2 RIP Locks, 2 Processors, 1 Belt Roll)
819 200 108	RIPmate Kit w/ Disposable Bands - Keyhole (2 RIP Locks, 1 Belt Roll)
819 200 121	RIPmate Kit w/ Disposable Bands - A5 (2 RIP Locks, 2 Processors, 1 Belt Roll)
819 201 000	RIPmate Single Use Belt Roll (105 ft)
819 140 000	RIPmate Abdomen Processor
819 100 000	RIPmate Thorax Processor



Ambu Inc.

6740 Baymeadow Drive
Glen Burnie, MD 21060
Tel.: 1 410 768 6464
1 800 262 8462
Fax: 1 800 262 8673
www.ambu.com