

Ambu[®] aCart[™] Portfolio



Ambu

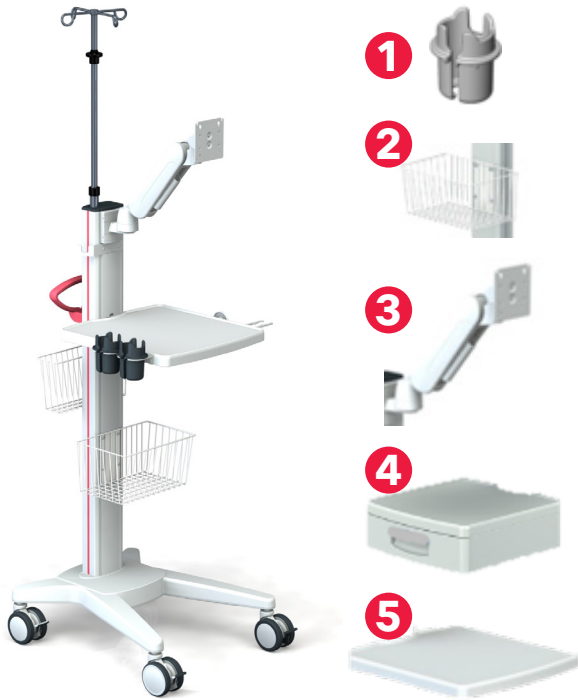
Ambu® aCart™ Portfolio

STREAMLINED AND CONFIDENT

Designed for flexibility and ease of use, the Ambu® aCart™ portfolio offers a standardized yet adaptable platform to support Ambu's endoscopy solutions. With integrated power management, smart storage and clean cable organization, the carts help teams move efficiently and operate with confidence.



Ambu® aCart™ Compact Ambu® aCart™ Plus



aCart Compact: Airway Accessories Option

Components to address user needs

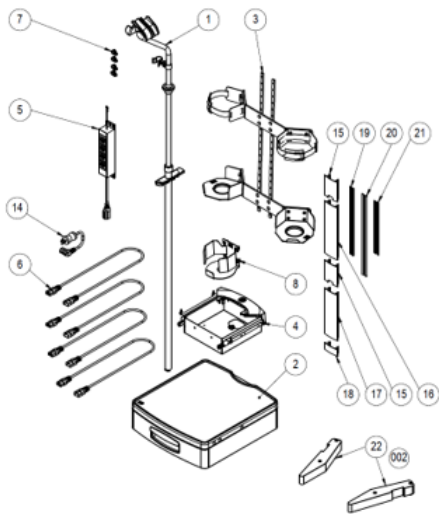
1. **Universal endoscope holder** which can be used for SureSight® and aScope™ 4 & 5 families.
2. **Small basket** to store airway tools and other endoscopic equipment.
3. **Vario Mount** to flexibly mount aView™ 2 Advance or an external screen.
4. **Drawer:** Integrated drawer offers organized storage to keep necessary items within reach.
5. **Shelf** offers durable, open storage with the capability to mount an endoscope holder for added flexibility.

aCart Compact Accessory Kit

Can be applied to retrofit the current aCart Compact

Kit Highlights:

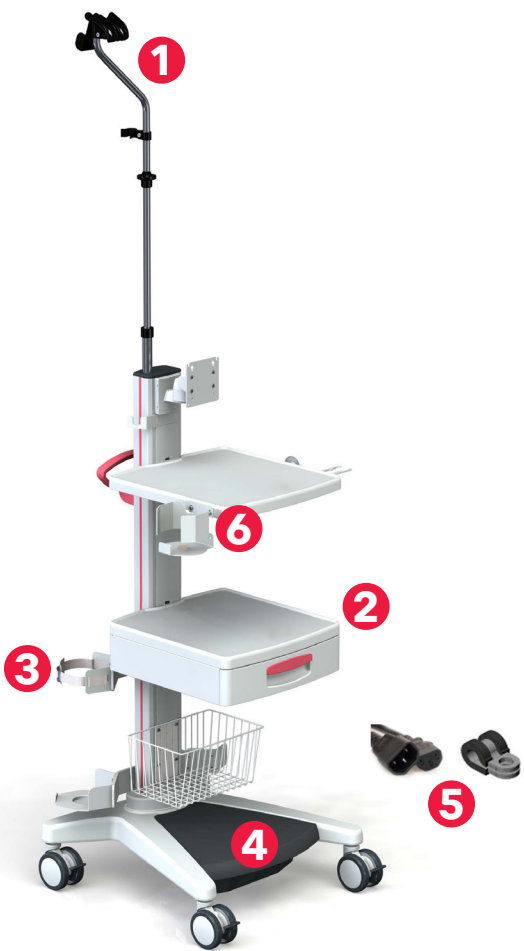
1. **Endoscope holder** designed for prepared or in use single-use GI endoscopes.
2. **Drawer:** Integrated drawer offers organized storage to keep necessary items within reach.
3. Two **CO₂ cylinder holders** to store cylinders with 3/5/10 L content
4. **Electrical box** that stores electrical components, i.e., (5) **4-way IEC socket strip**.
 - (14) US power cable is the standard version supplied with the cart.
6. **4x IEC cables** (2m) connect to the socket strip; (7) rubber tube clamps fixed to the column.
7. **Water bottle holder** to accommodate a 1-liter water bottle with a 120mm dimension



aCart Compact Transformer

Components to address user needs

1. **Endoscope holder** designed for prepared or in use single-use endoscopes.
2. **Drawer:** Integrated drawer offers organized storage to keep necessary items within reach.
3. Two **CO₂ cylinder holders** to store cylinders with 3/5/10 L content
4. An **integrated medical isolation transformer** complements the electrical safety of the cart and is designed to reduce the risk of an electrical shock and to protect the valuable endoscopic equipment from power surges.
 - 1200 VA, power switchable between 115V (EU) & 230V (US)
 - 6-way EURO socket strip (IEC 60320)
 - Integrated On / Off switch
 - Electrical testing at ITD
5. **6x IEC cables** (2m long) connect the devices with the **6-way** isolation thransformer. **6x tube clamps** with rubber ensure that the cables can be fixed in the support column.
6. **Water bottle holder** to accommodate a 1-liter water bottle with a 120mm dimension.



SPECIFICATIONS

Dimensions		Isolation transformer	
Width	24 in.	Voltage amper	1200 VA
Height without endoscope holder	52.4 in.	Voltage switch options	115 VAC & 230 VAC
Height with endoscope holder min./max	75.4/108.5 in.	IEC power socket	6-way
Depth	24.4 in.		

aCart Compact E-Box

Components to address user needs

1. **Endoscope holder** designed for prepared or in use single-use GI endoscopes.
2. **Drawer:** Integrated drawer offers organized storage to keep necessary items within reach.
3. Two **CO₂ cylinder holders** to store cylinders with 3/5/10 L content
4. **Electrical box** that stores electrical components, i.e., **4-way IEC socket strip**.
 - US power cable is the standard version supplied with the cart.
 - EU, UK and CH power cables have additional SKUs for the order
5. **4x IEC cables** (2m) connect to the socket strip; (4) rubber tube clamps fixed to the column.
6. **Water bottle holder** to accommodate a 1-liter water bottle with a 120mm dimension.

SPECIFICATIONS

Dimensions		Isolation transformer	
Width	24 in.	Voltage amper	1200 VA
Height without endoscope holder	52.4 in.	Voltage switch options	115 VAC & 230 VAC
Height with endoscope holder min./max	75.4/108.5 in.	IEC power socket	6-way
Depth	24.4 in.		





ORDERING SPECIFICATIONS

Item no.	Name
KN.1130.800	aCart Compact (Transformer) US
KN.1044.800	aCart Compact E-Box
KN.1052.991	aCart Compact Accessory Kit
KN.1171.903	aCart Compact Drawer
KN.9716.991	aCart Compact Shelf
KN.1245.800	aCart Compact Universal Endoscope Holder
KN.1244.991	aCart Compact Basket
KN.1215.991	aCart Compact Vario Mount
KN.9713.800	aCart Compact
KN.9740.800	aCart Plus

ABOUT AMBU

Since 1937, Ambu has been rethinking solutions to save lives and improve patient care. Today, millions of patients and healthcare professionals worldwide depend on the efficiency, safety and performance of our single-use endoscopy, anesthesia and patient monitoring solutions. Headquartered near Copenhagen in Denmark, Ambu employs around 5,000 people in North America, Europe, Latin America and Asia Pacific.

For more information, please visit AmbuUSA.com.

Questions? Contact your Ambu representative at **800-262-8462** or visit **www.ambuUSA.com**

Ambu FOREVER
FORWARD

Ambu Inc.
6721 Columbia Gateway Drive
Suite 200
Columbia, MD 21046
Tel. 800 262 8462
Fax 800 262 8673
ambuUSA.com