

Ambu *Wireless* Next Generation

Troubleshoot Guide

Ambu[®] Manikin Management Module

Content

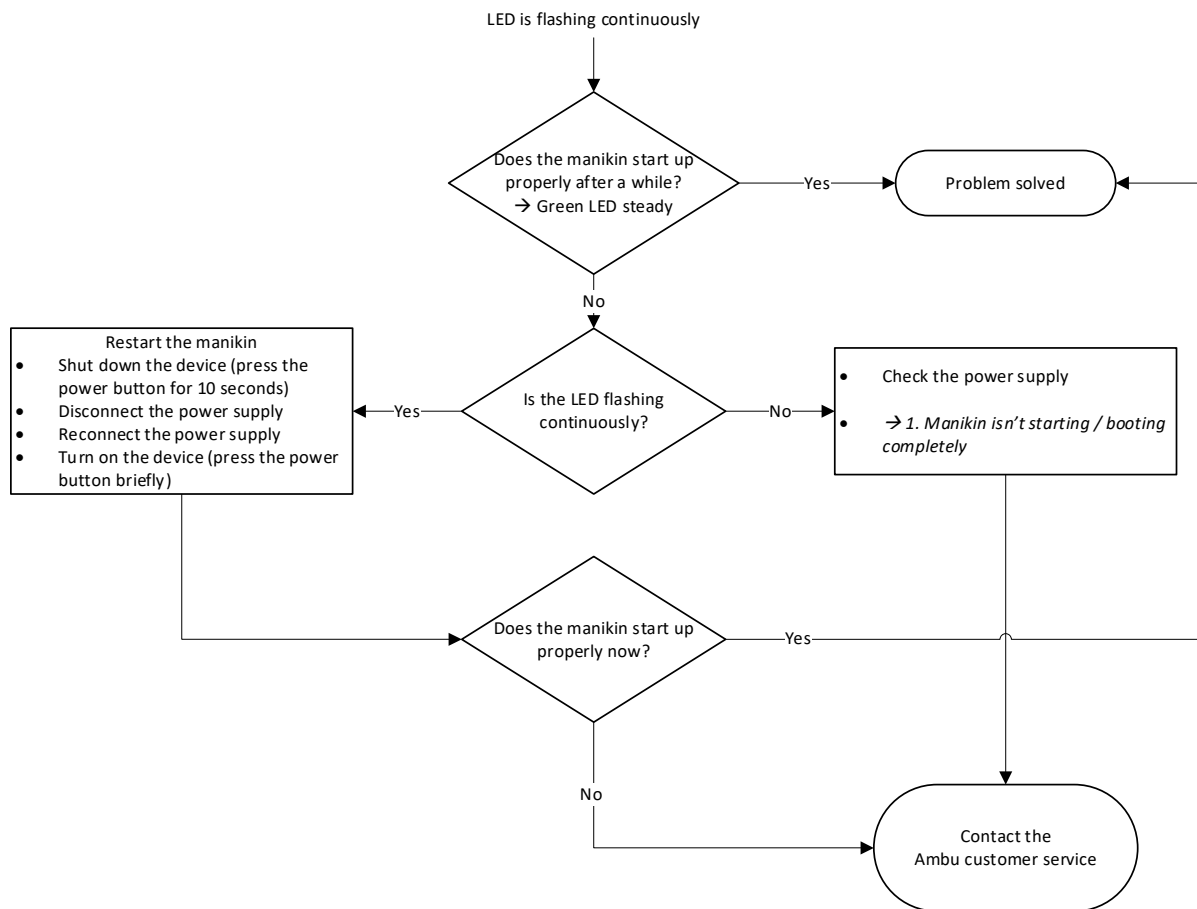
1. Manikin is not starting/booting completely	3
2. LED is flashing continuously	4
3. Manikin is turning automatically off	5
4. Monitoring instrument is not working (correctly)	6
5. Pulse is not working.....	7
6. No WiFi signal available	8
7. WiFi connection problems.....	9
7.1 Between a (mobile) device and the manikin.....	9
7.2 No access to the manikin despite WiFi connection (phone/tablet).....	9
7.3 Between several training manikins (host/client).....	10
7.4 In viewing mode (with many viewers).....	10
8. Manikin Management Module - Software Problems	11
8.1 Starting a new session (selecting the manikin) is not possible	11
8.2 Manually entered session duration cannot be deleted	11
8.3 Display error of compression/ventilation graph	12
8.4 Compression/ventilation graph is drifting	12
8.5 ECC and ventilation rate are not displayed.....	13
8.6 Real-time ECC rate is not changing/accurate	13
8.7 Time measurement tool "clicking & dragging" is misplaced	14
8.8 Graphs in Surveillance View are too small.....	14
8.9 Debriefing: Graph is not displaying all data.....	15
8.10 Debriefing: ECC rate is not correct	15
8.11 Debriefing: Compression/ventilation ratio 30:2 is not correct	16
8.12 Self-training: Results are not displayed	16
8.13 Training course: Duration is not selectable	17
8.14 Training course cannot be deleted	17
8.15 Training course cannot be imported	18
8.16 Previous events are displayed in a new session.....	18
8.17 Sounds are not matching the physiological values.....	19
8.18 Displayed ECG signal output is wrong.....	19
8.19 ECG signal is not displayed.....	20
8.20 Defibrillation symbol is not displayed in the ECG graph.....	21
8.21 Defibrillation is not detected	22

8.22 Wording is displayed incorrectly	23
9. Database problems.....	24
9.1 Database is loading very long	24
9.2 Event icon is not uploaded	24
9.3 Sound file is not uploaded.....	25
9.4 ECG cannot be edited/saved.....	25
9.5 Creation of a scenario is not possible	26
9.6 Scenario trigger "Time interval" is not counting correctly	26
9.7 System crash after the scenario trigger "Compression".....	27
9.8 System crash during the creation of a scenario	27
9.9 Scenario: Default sound of selected ECG cannot be changed	28
9.10 Scenario is not working after external creation (CSV-file)	28
9.11 Scenario is not working after export and re-import	29
10. Manikin configuration (Ambu.login/config)	30
10.1 Language file is not working	30
10.2 Language file: Characters are not displayed correctly.....	30
10.3 Hard reset of manikin is not possible	31

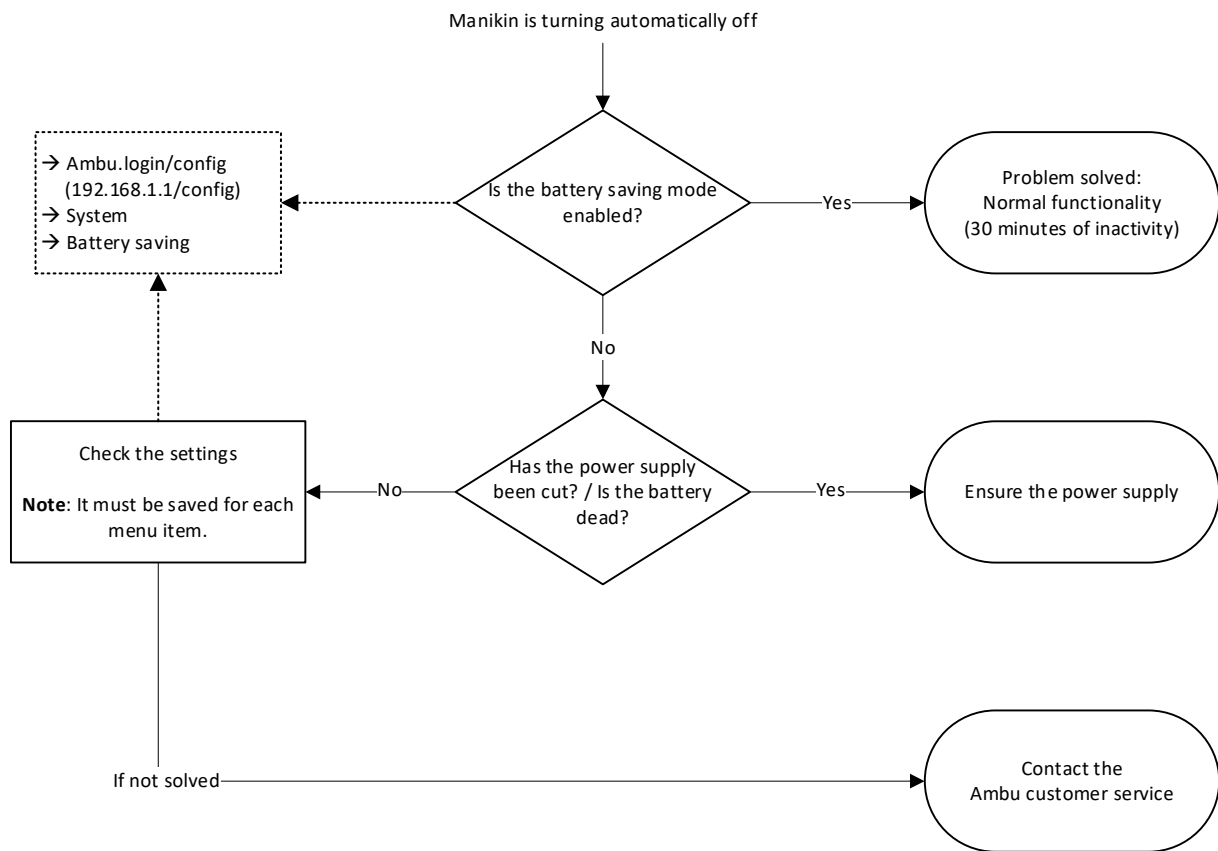
1. Manikin is not starting/booting completely



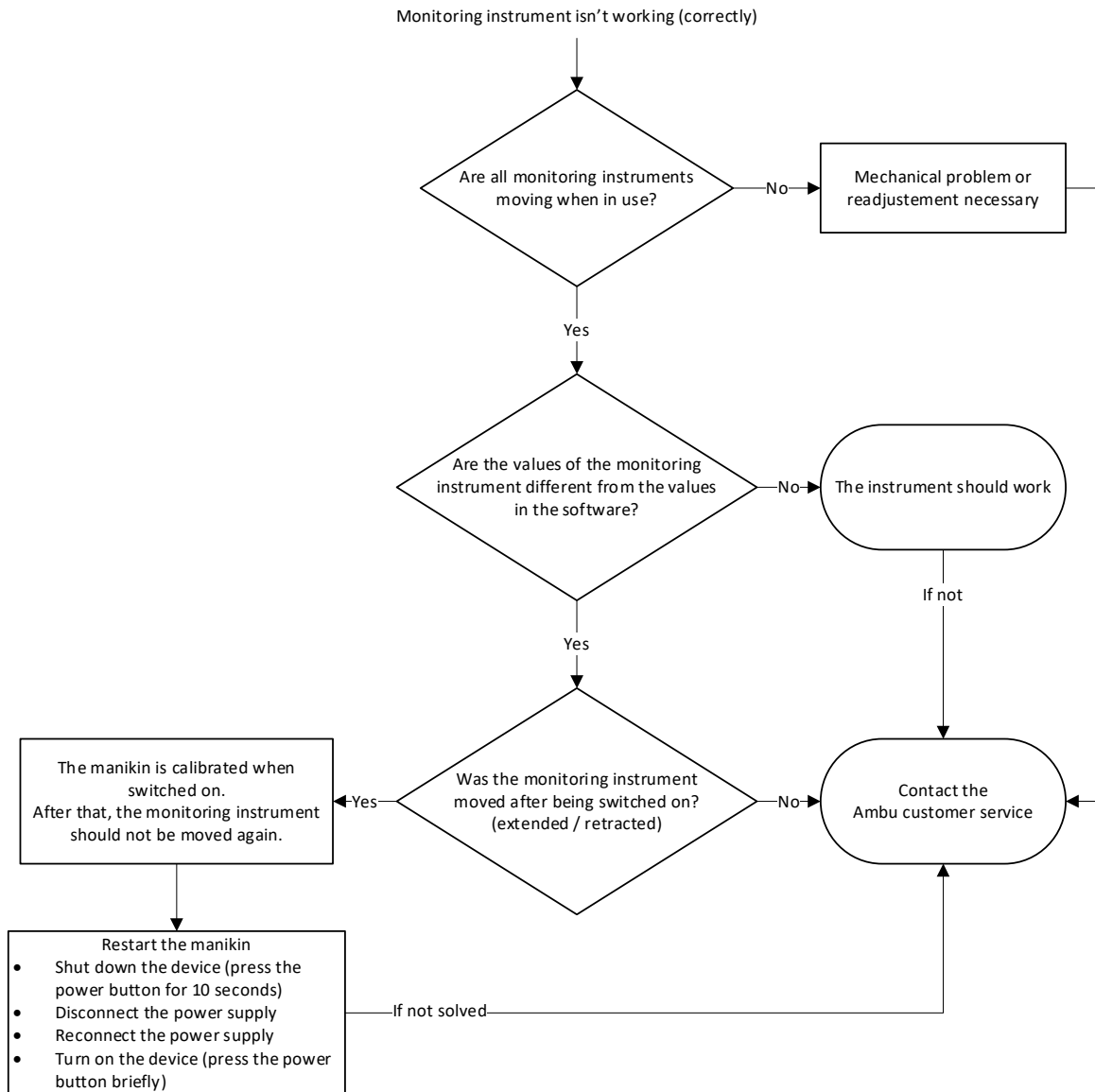
2. LED is flashing continuously



3. Manikin is turning automatically off



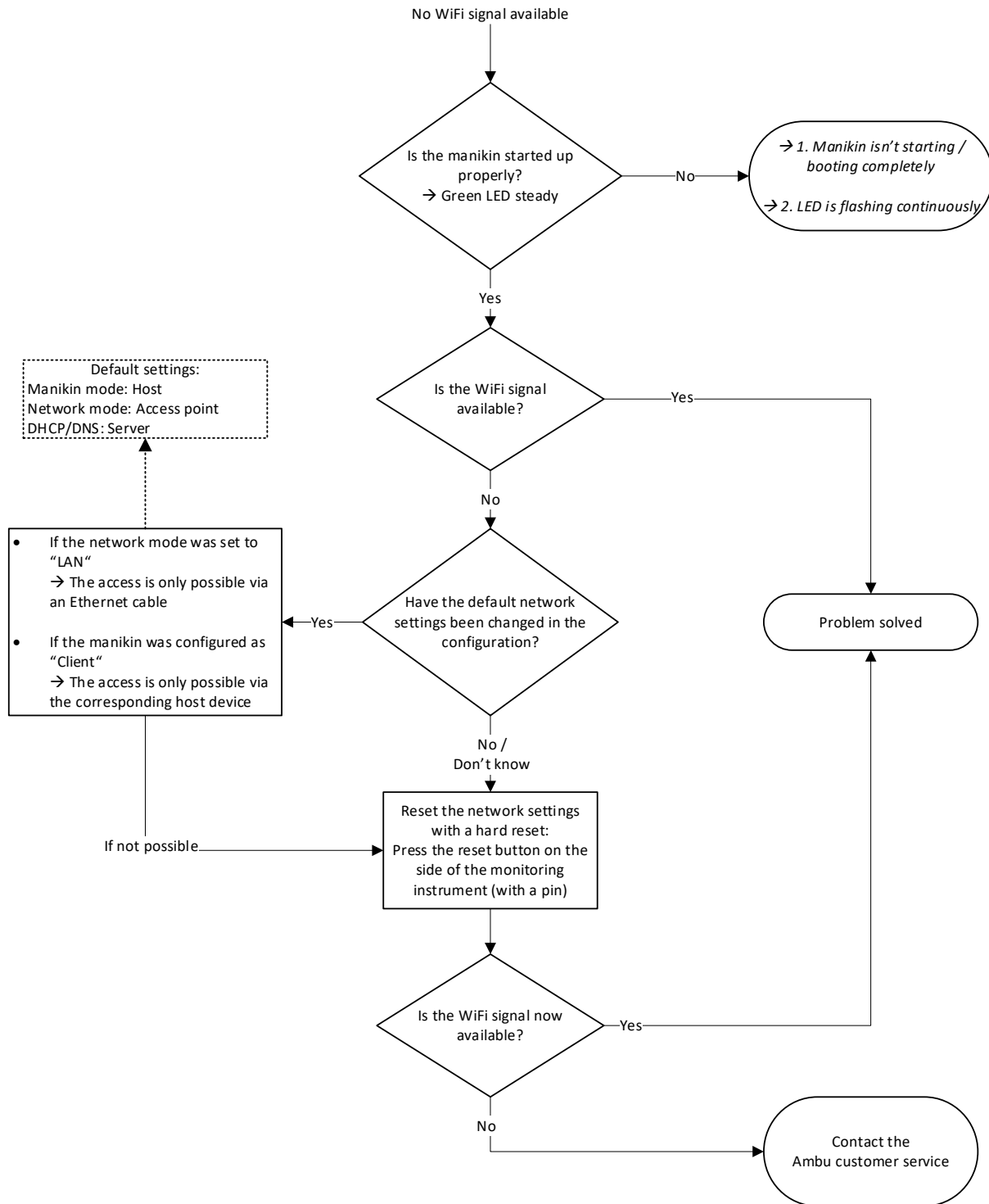
4. Monitoring instrument is not working (correctly)



5. Pulse is not working

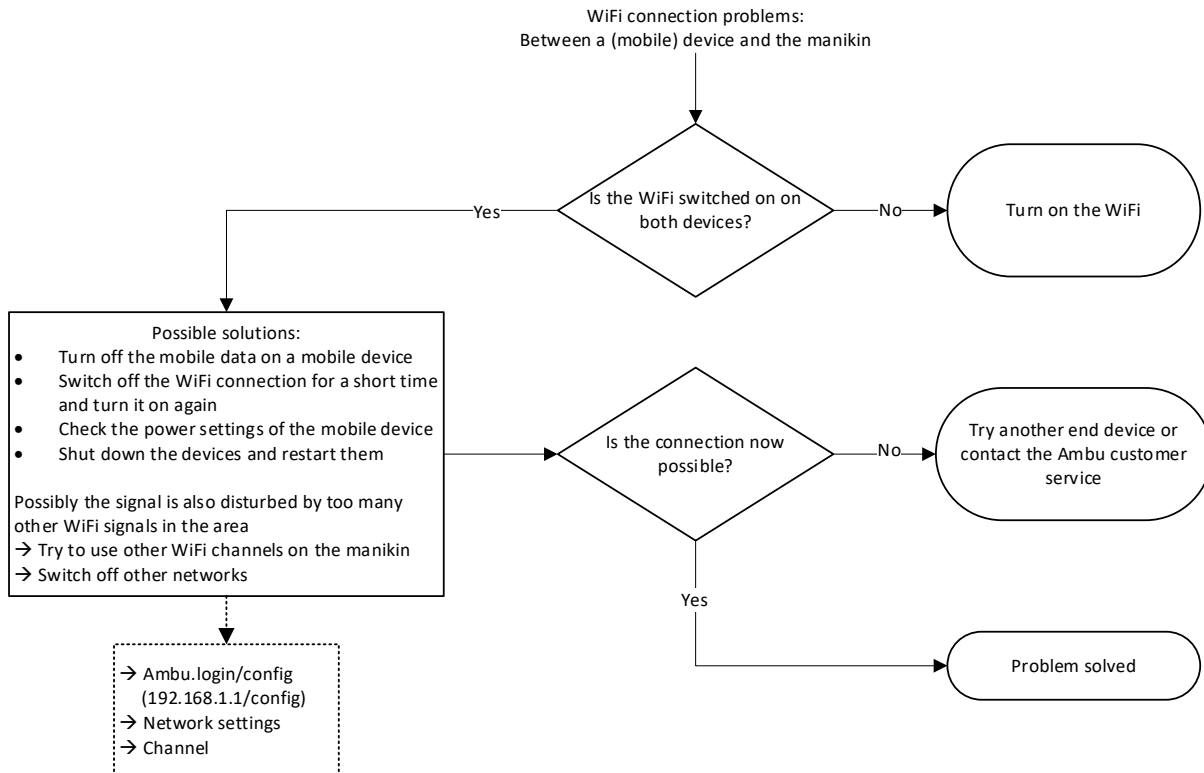


6. No WiFi signal available

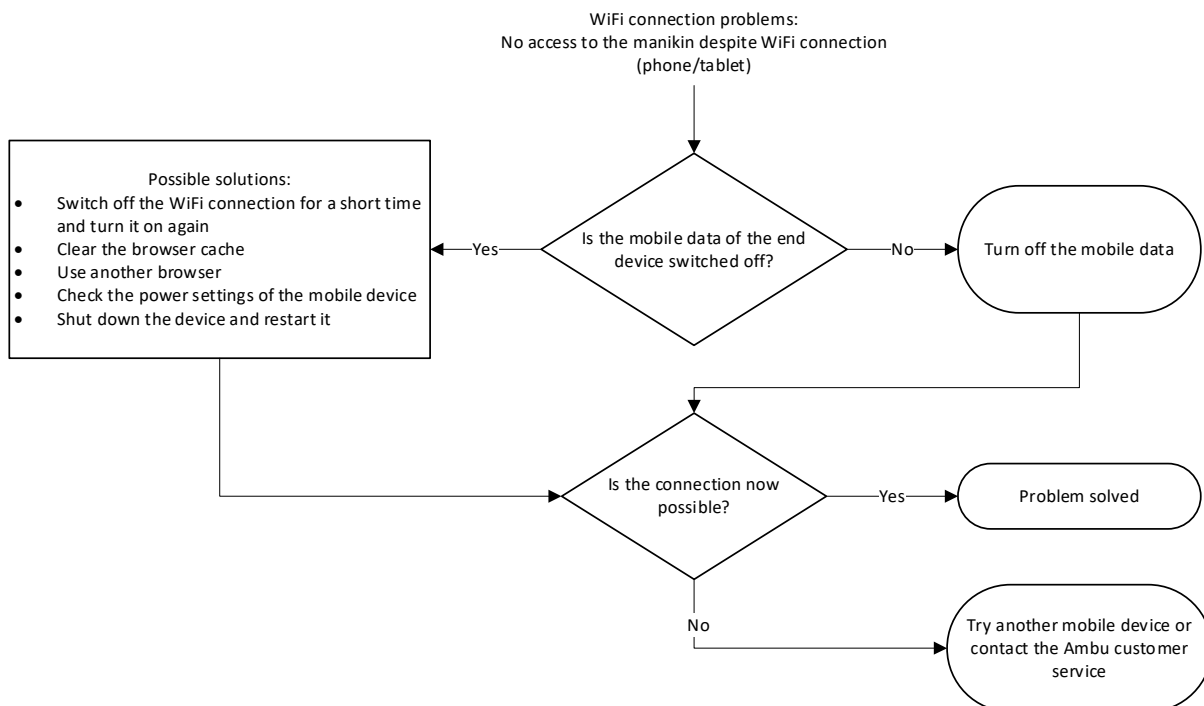


7. WiFi connection problems

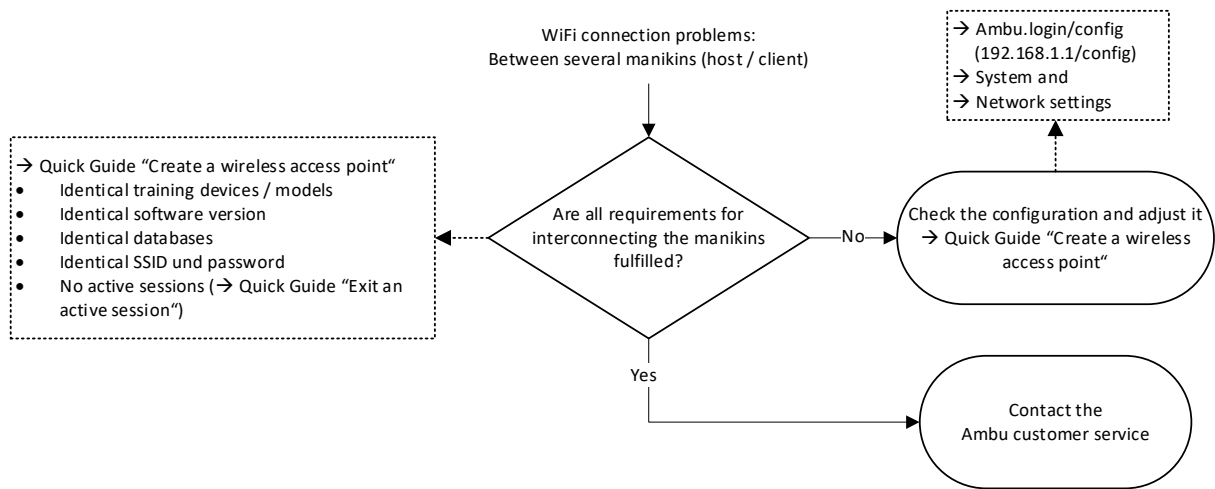
7.1 Between a (mobile) device and the manikin



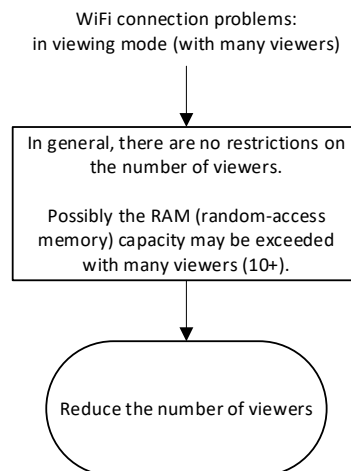
7.2 No access to the manikin despite WiFi connection (phone/tablet)



7.3 Between several training manikins (host/client)

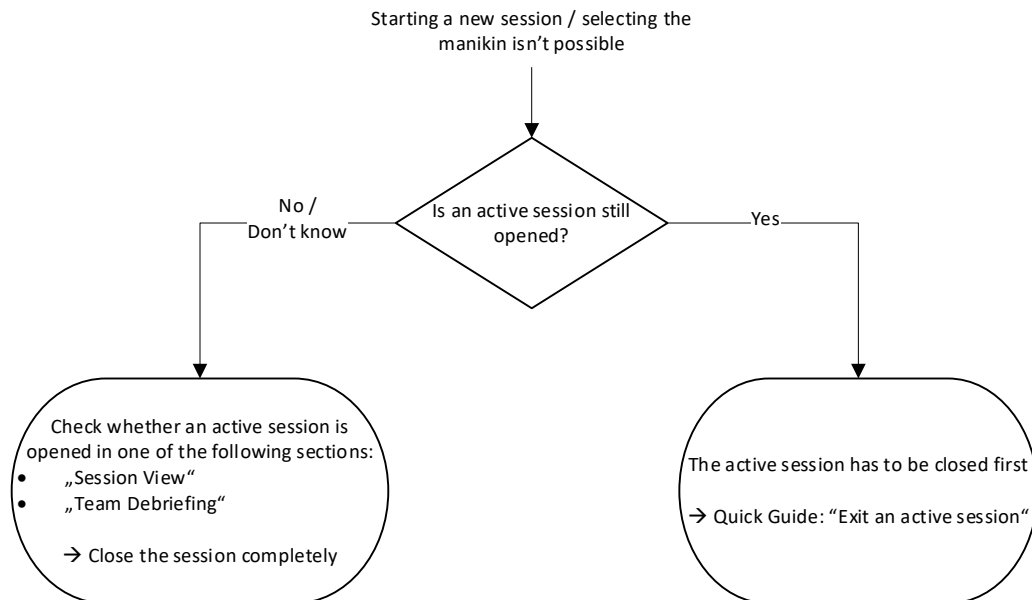


7.4 In viewing mode (with many viewers)

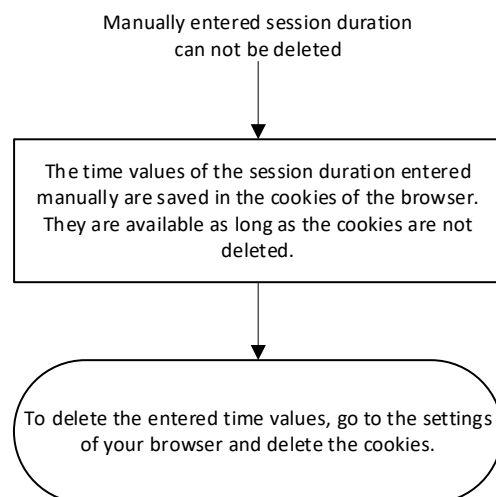


8. Manikin Management Module - Software Problems

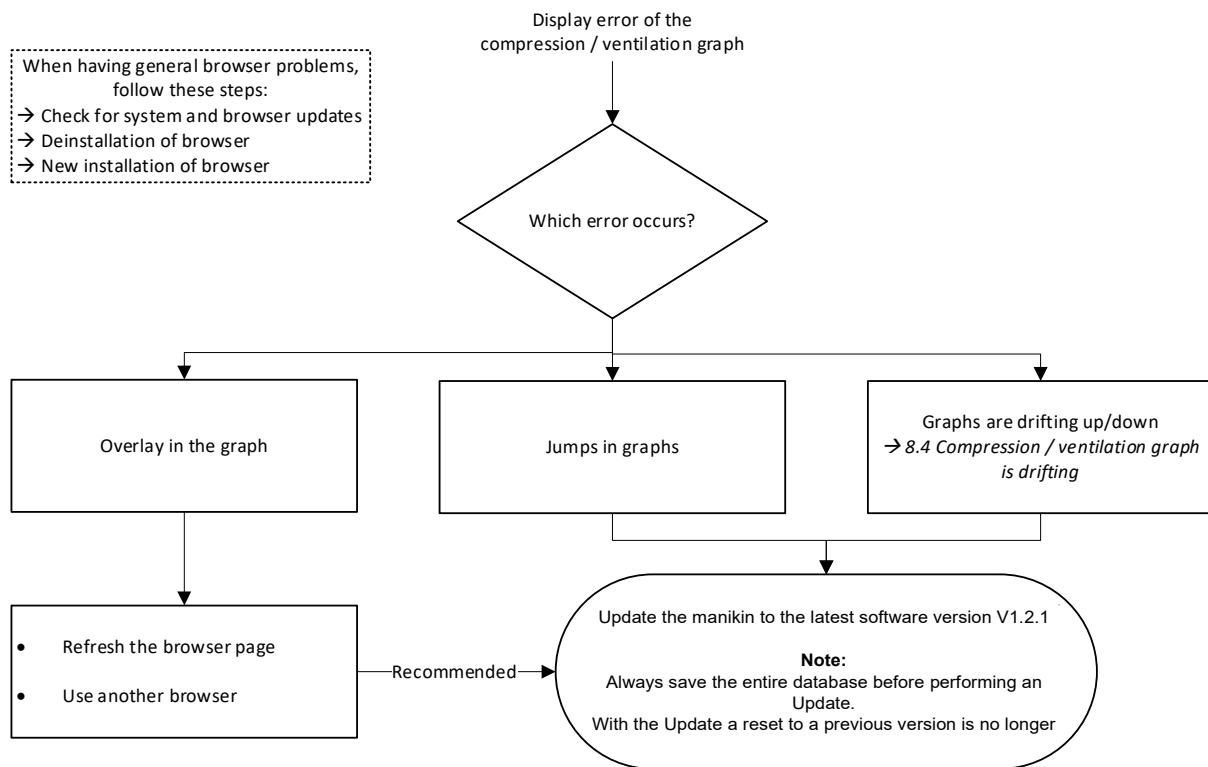
8.1 Starting a new session (selecting the manikin) is not possible



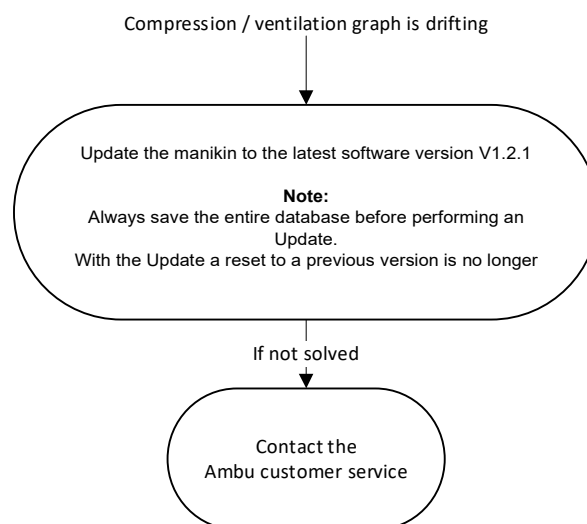
8.2 Manually entered session duration cannot be deleted



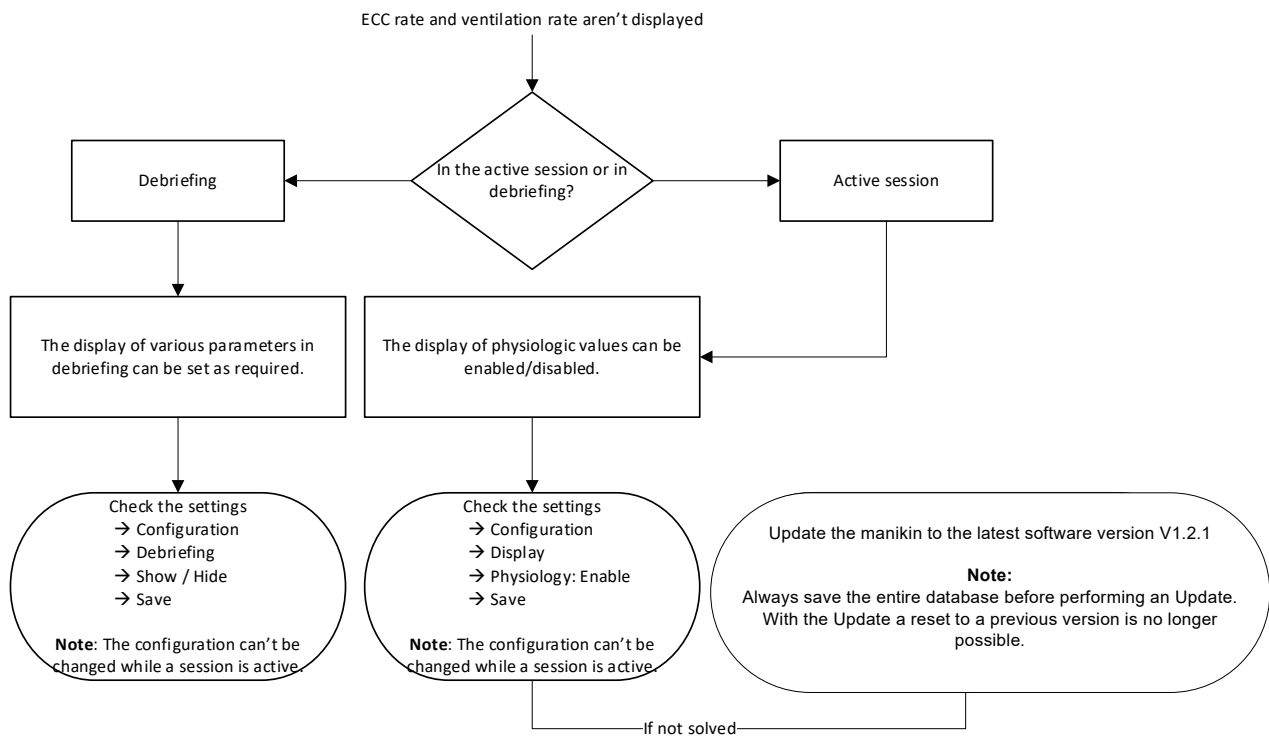
8.3 Display error of compression/ventilation graph



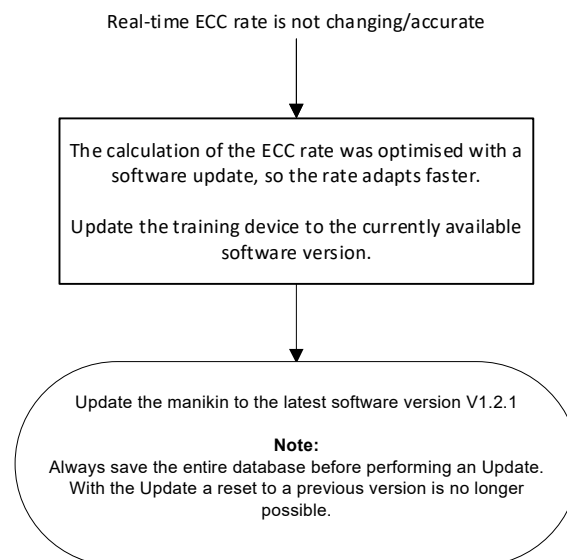
8.4 Compression/ventilation graph is drifting



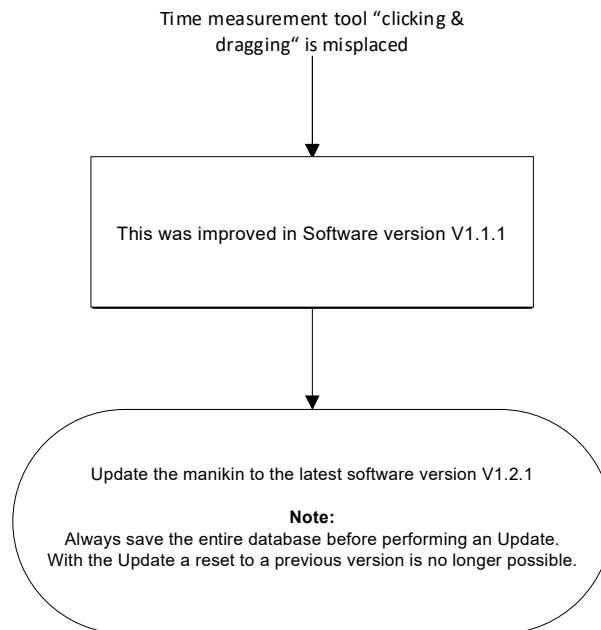
8.5 ECC and ventilation rate are not displayed



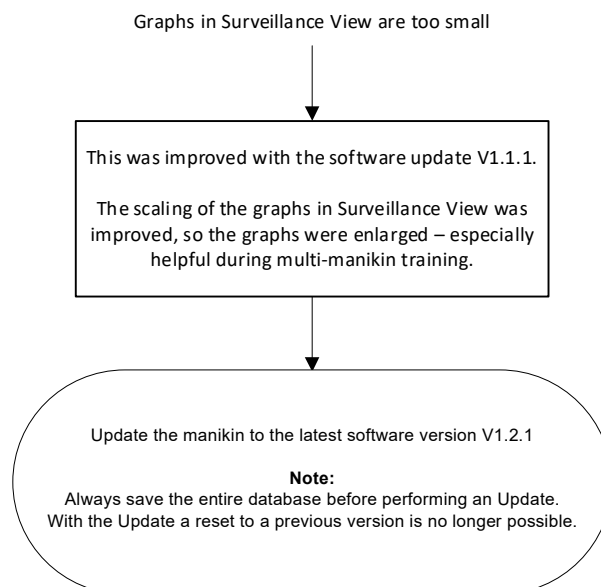
8.6 Real-time ECC rate is not changing/accurate



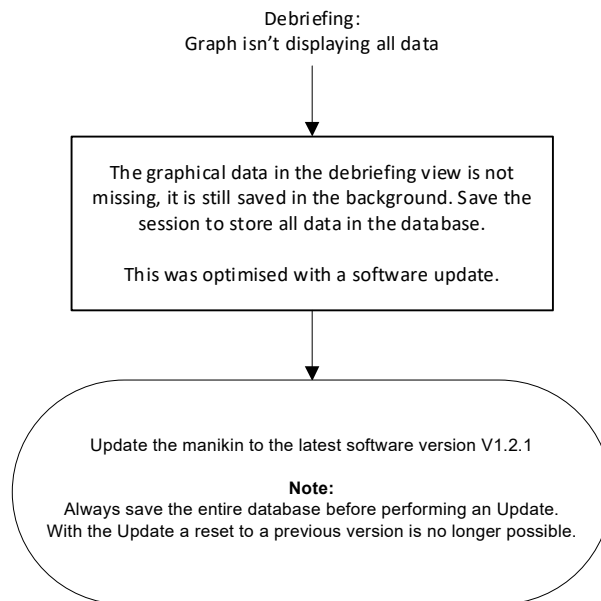
8.7 Time measurement tool “clicking & dragging” is misplaced



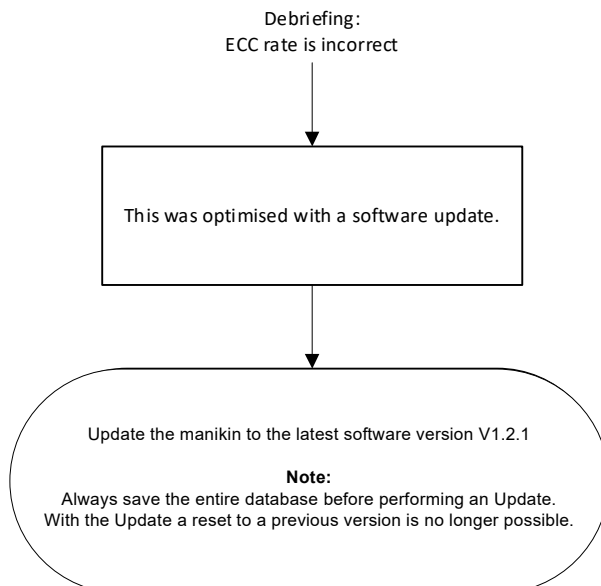
8.8 Graphs in Surveillance View are too small



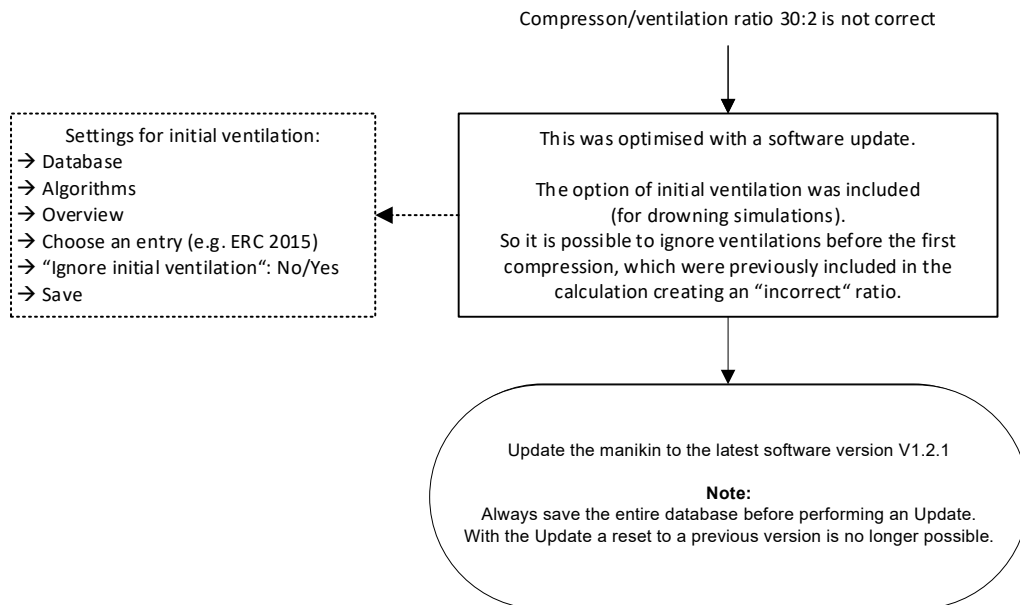
8.9 Debriefing: Graph is not displaying all data



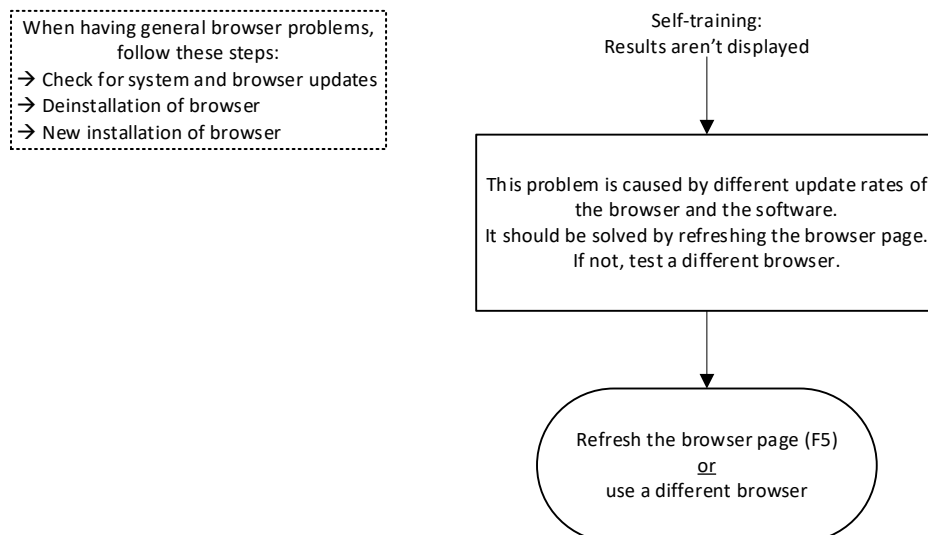
8.10 Debriefing: ECC rate is not correct



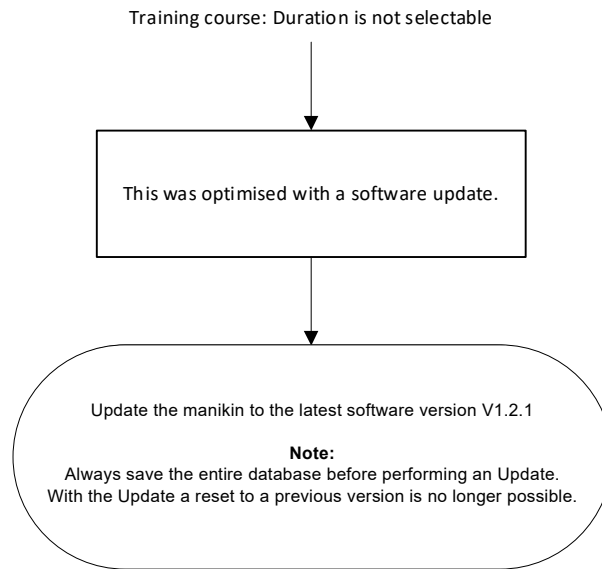
8.11 Debriefing: Compression/ventilation ratio 30:2 is not correct



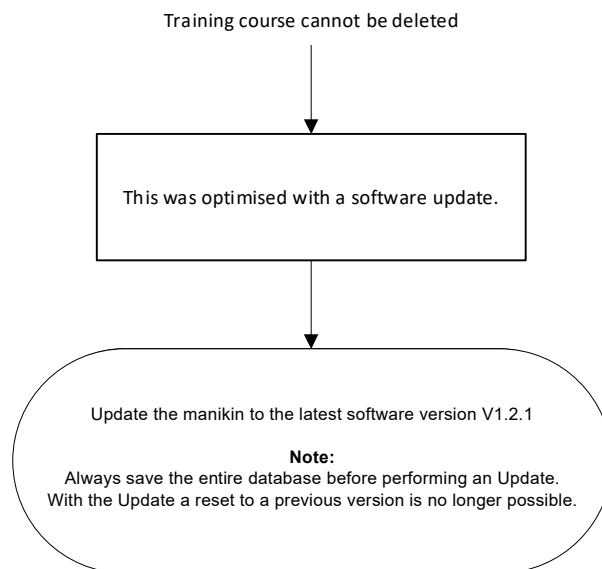
8.12 Self-training: Results are not displayed



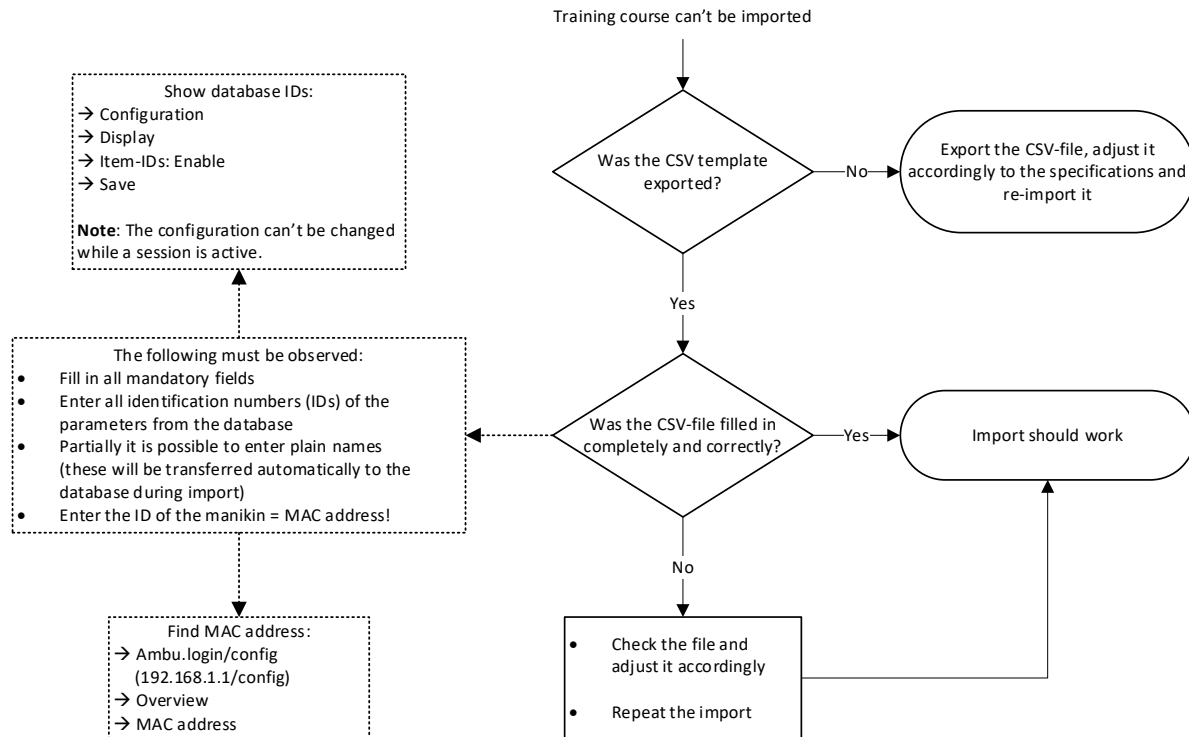
8.13 Training course: Duration is not selectable



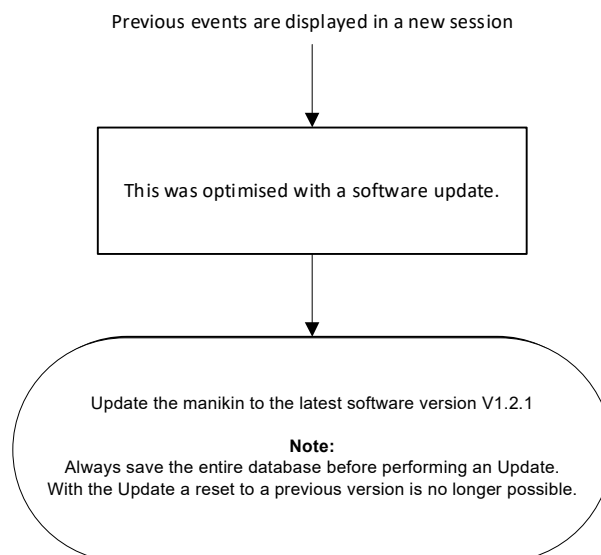
8.14 Training course cannot be deleted



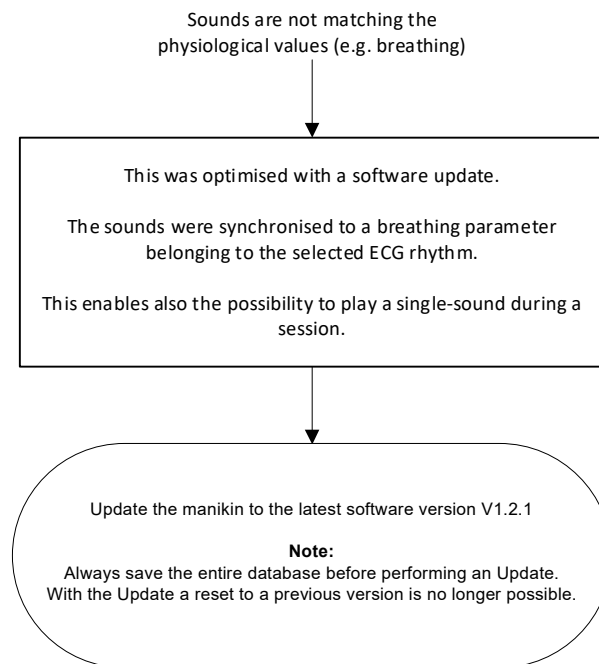
8.15 Training course cannot be imported



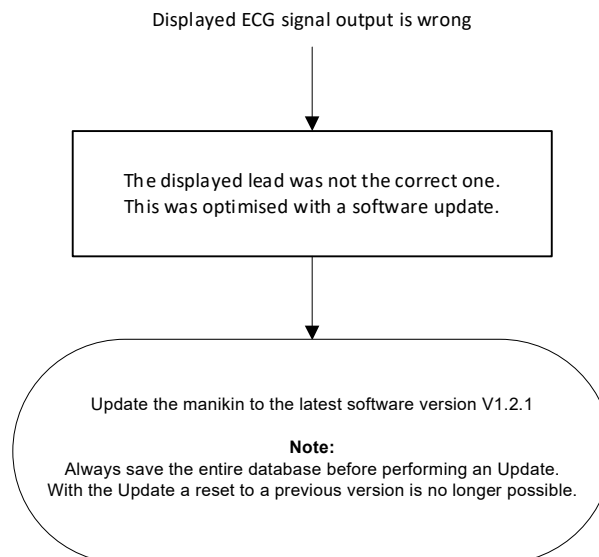
8.16 Previous events are displayed in a new session



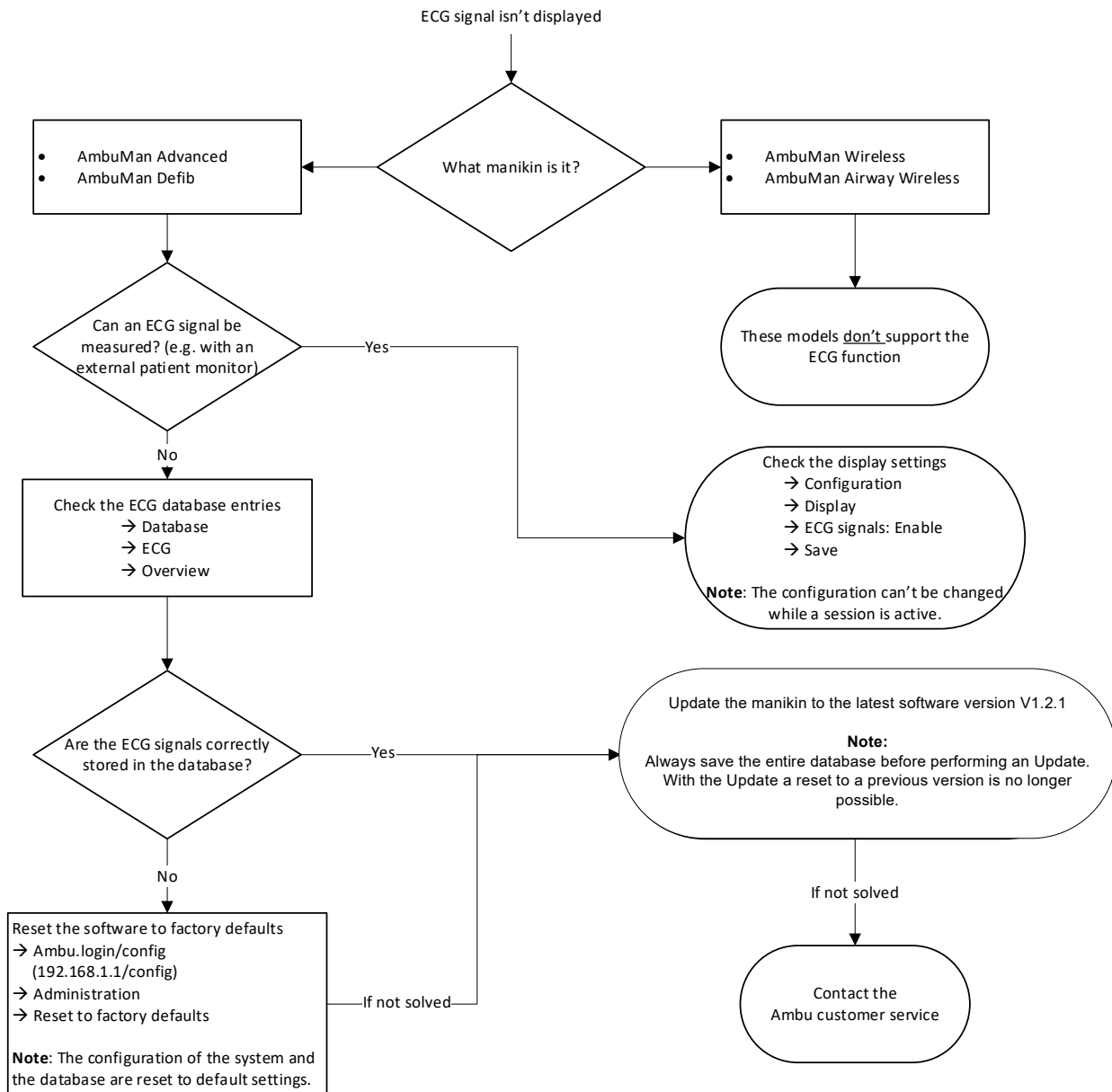
8.17 Sounds are not matching the physiological values



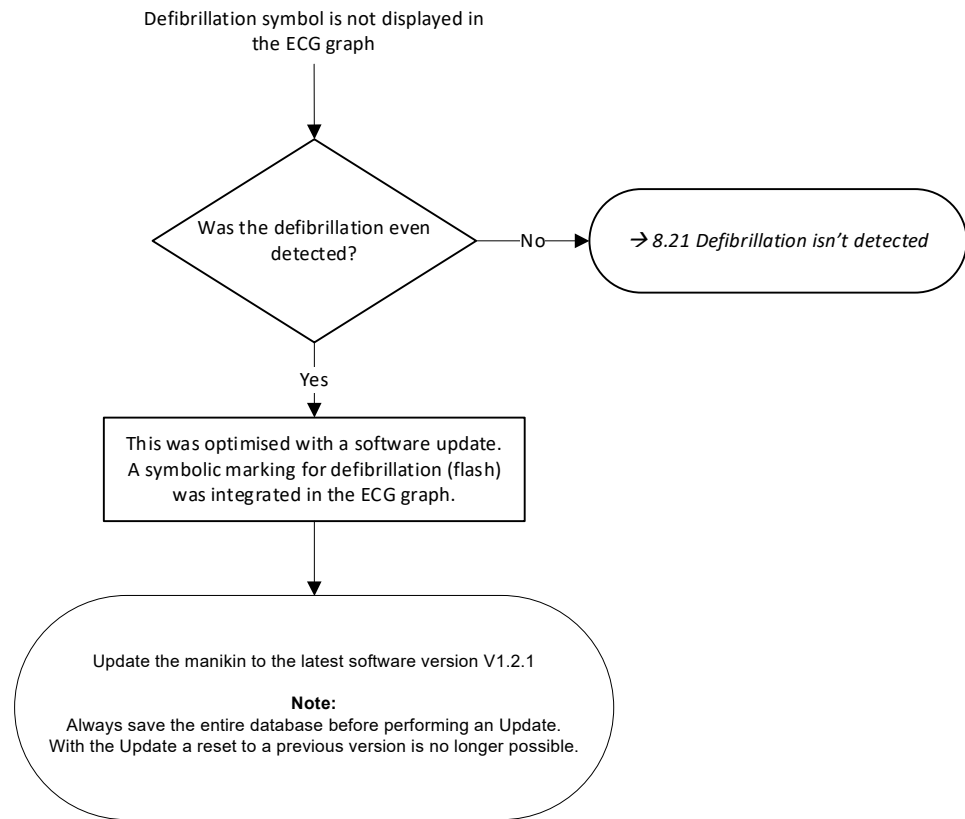
8.18 Displayed ECG signal output is wrong



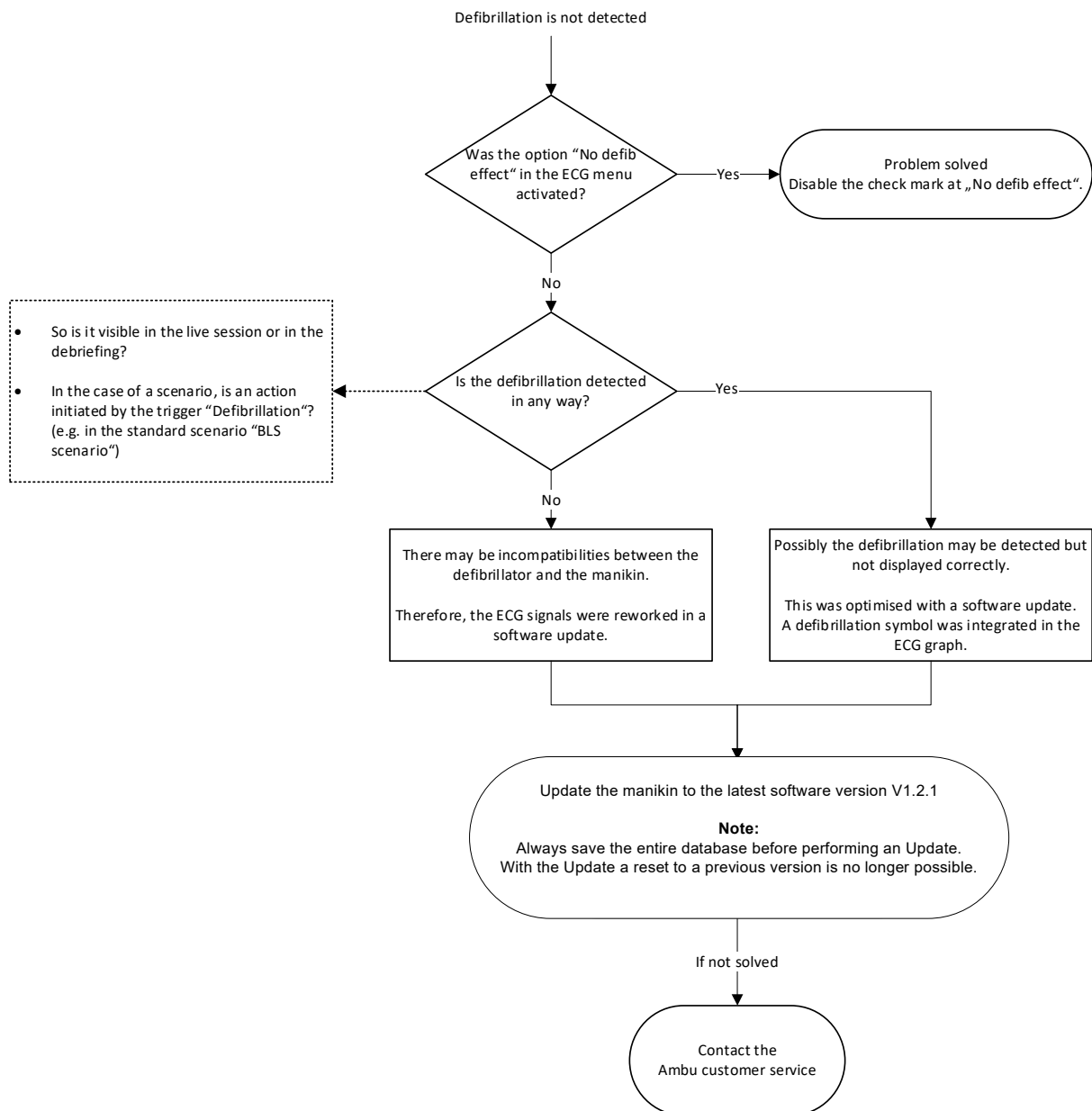
8.19 ECG signal is not displayed



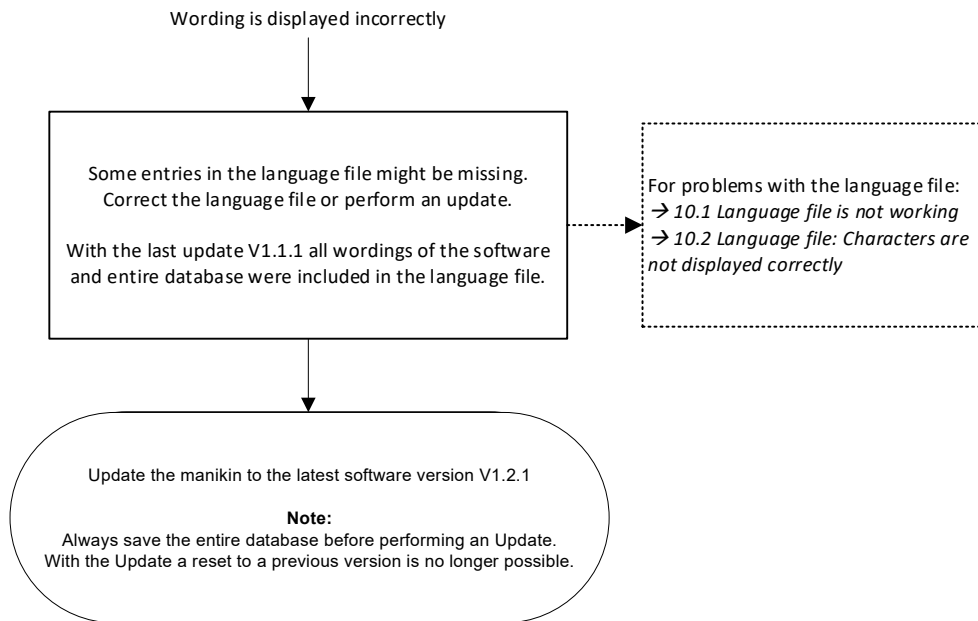
8.20 Defibrillation symbol is not displayed in the ECG graph



8.21 Defibrillation is not detected

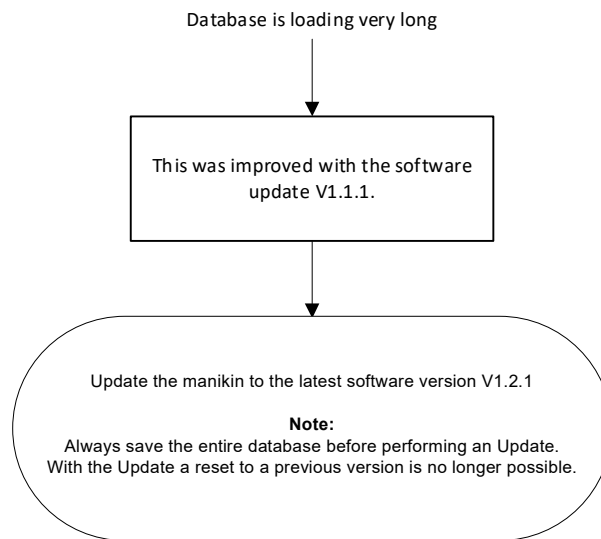


8.22 Wording is displayed incorrectly

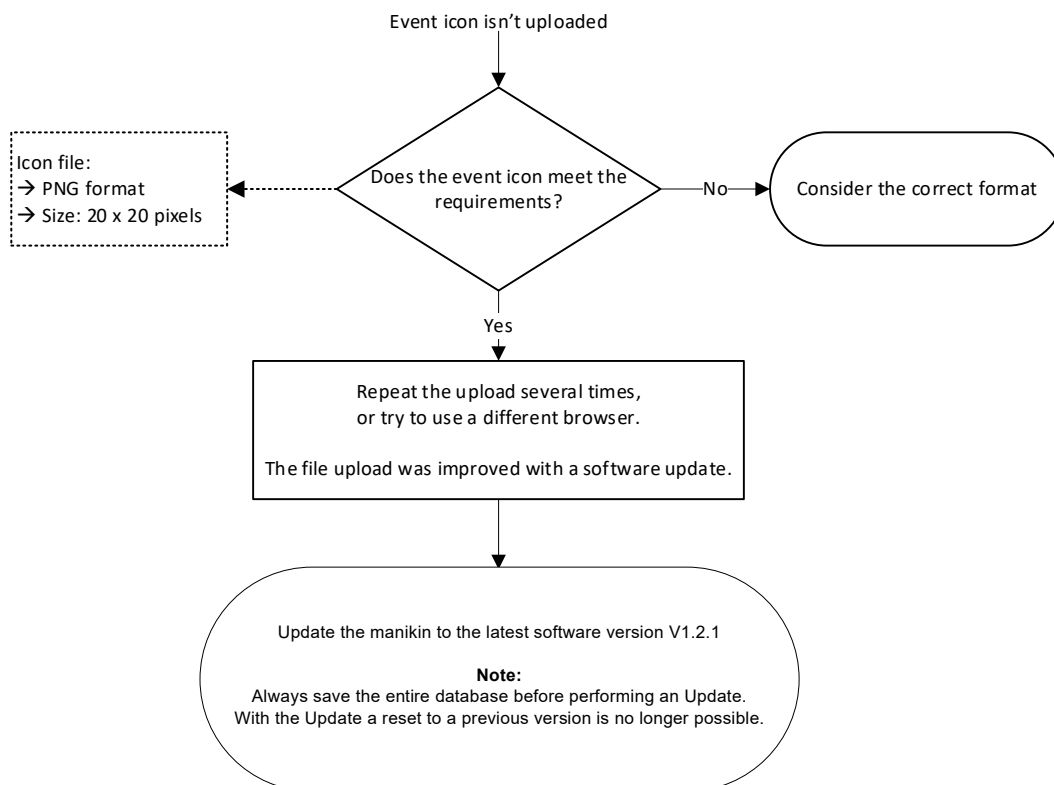


9. Database problems

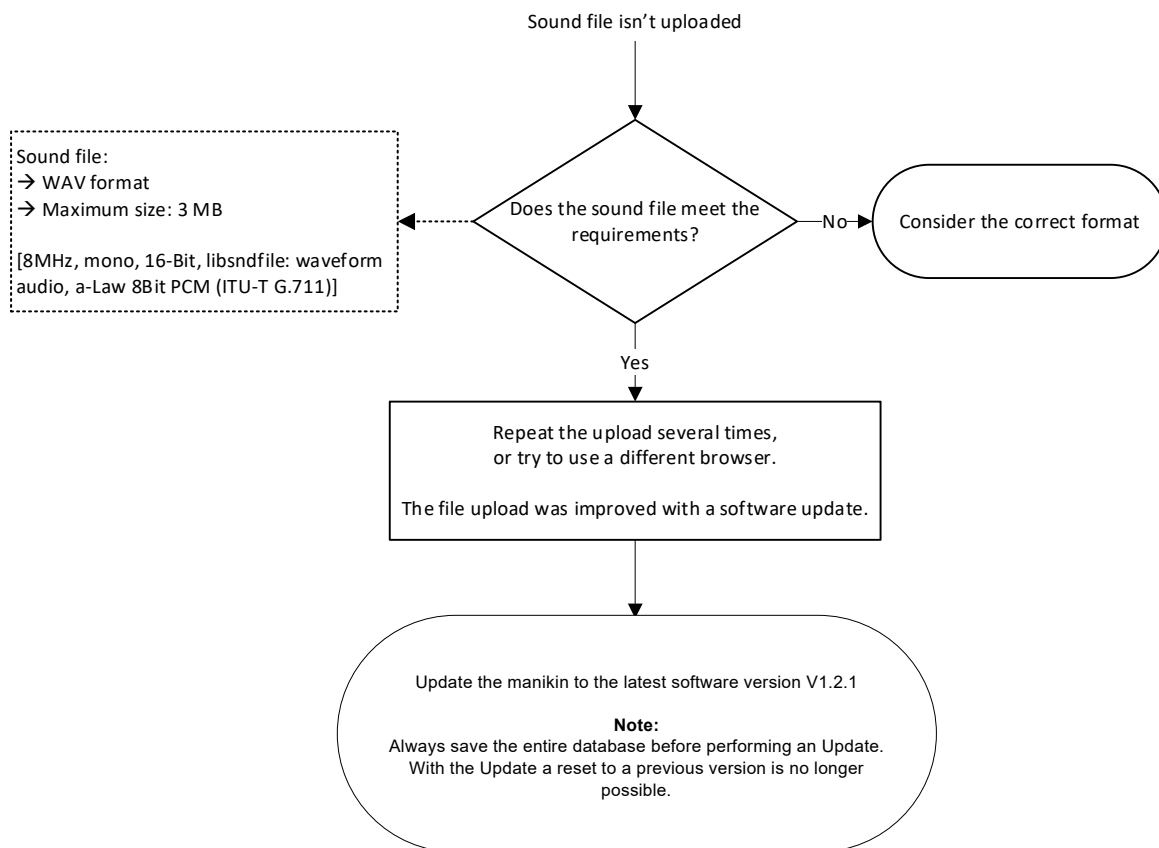
9.1 Database is loading very long



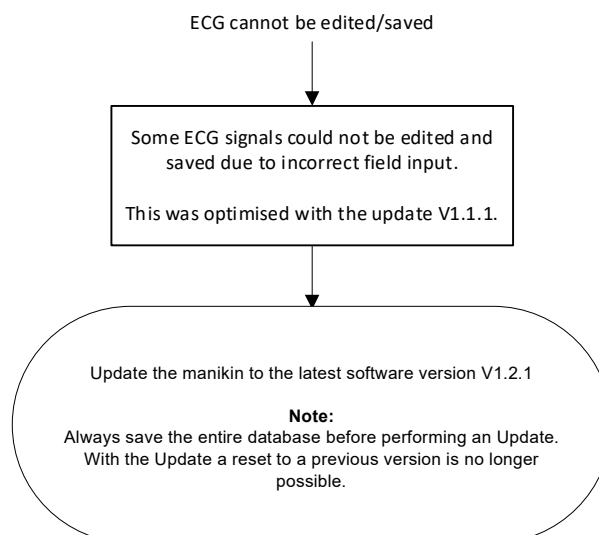
9.2 Event icon is not uploaded



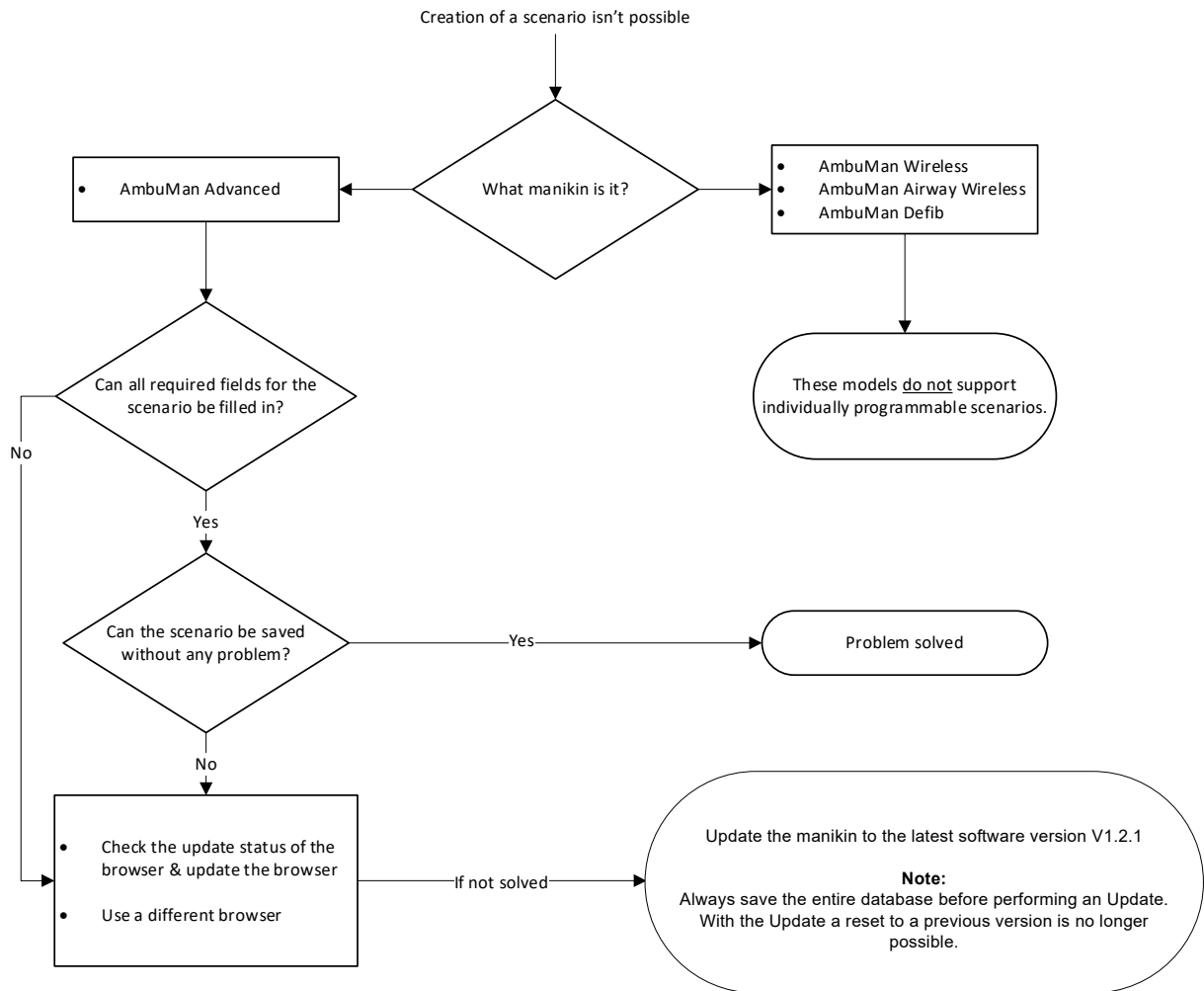
9.3 Sound file is not uploaded



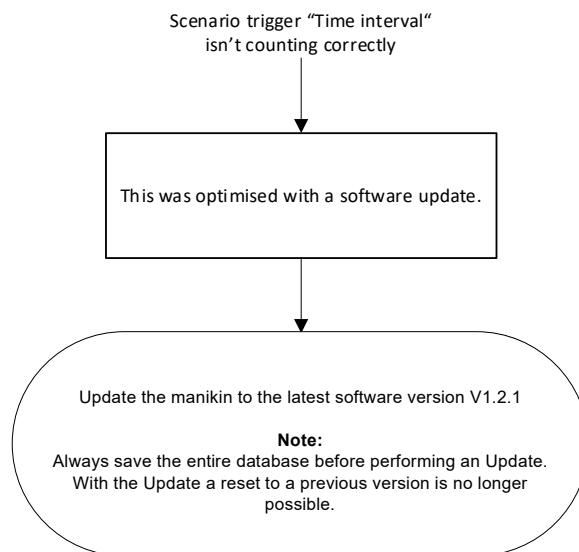
9.4 ECG cannot be edited/saved



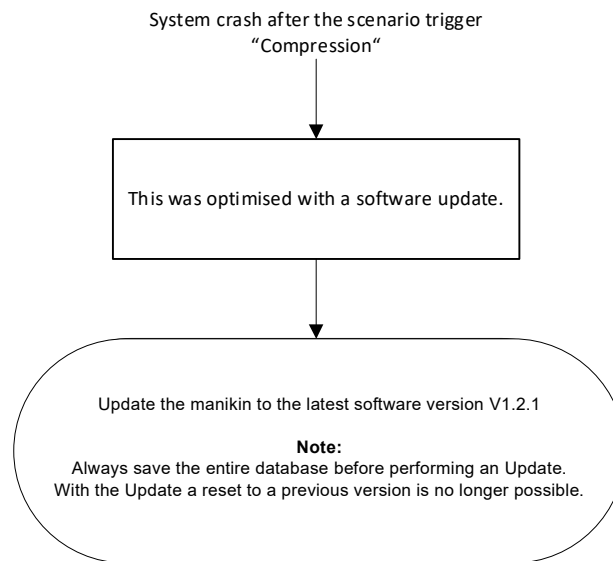
9.5 Creation of a scenario is not possible



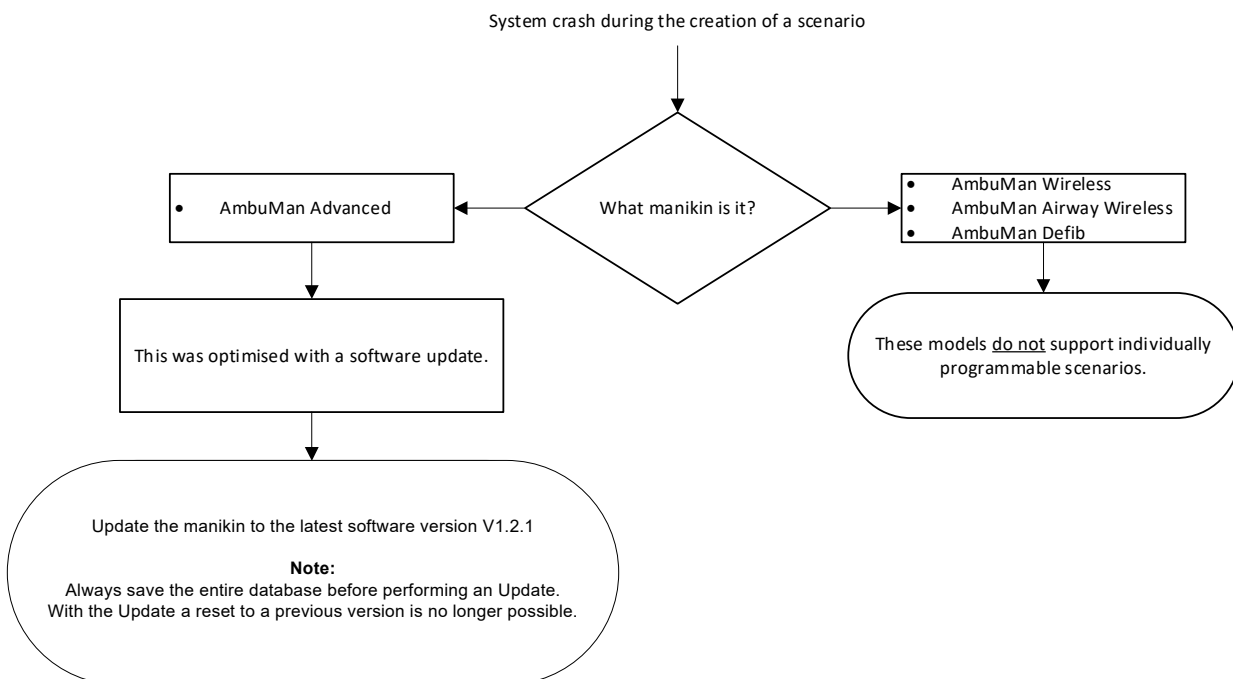
9.6 Scenario trigger "Time interval" is not counting correctly



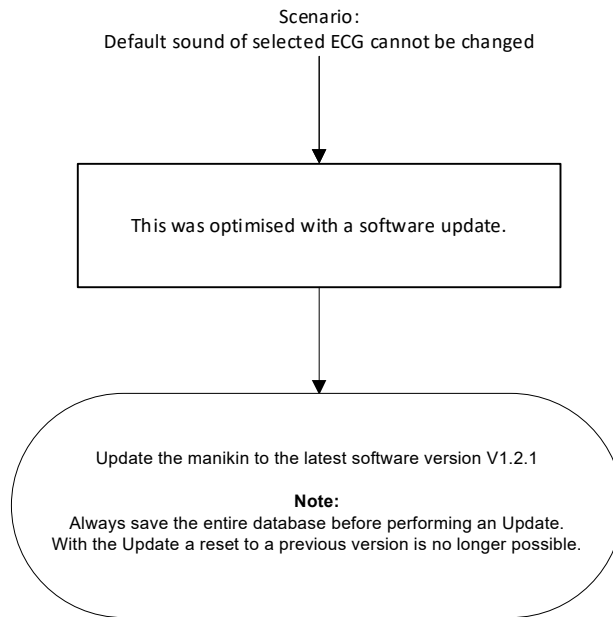
9.7 System crash after the scenario trigger "Compression"



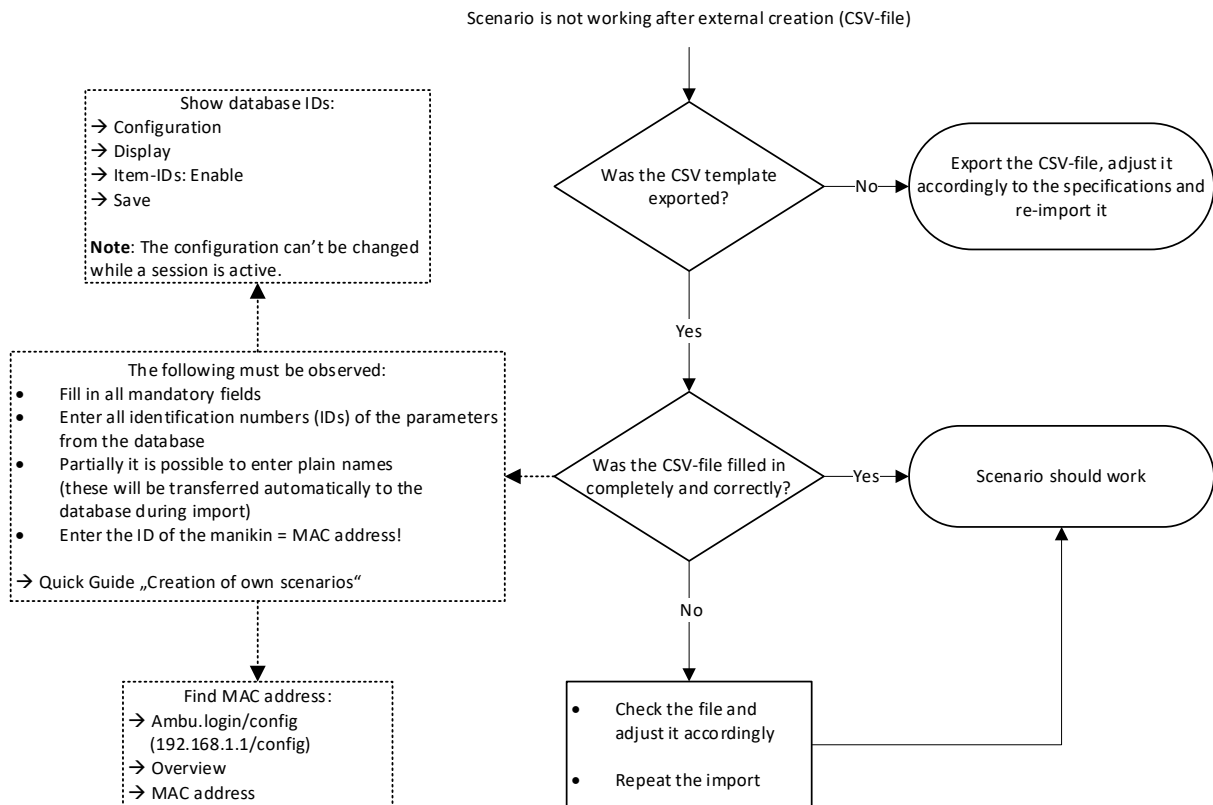
9.8 System crash during the creation of a scenario



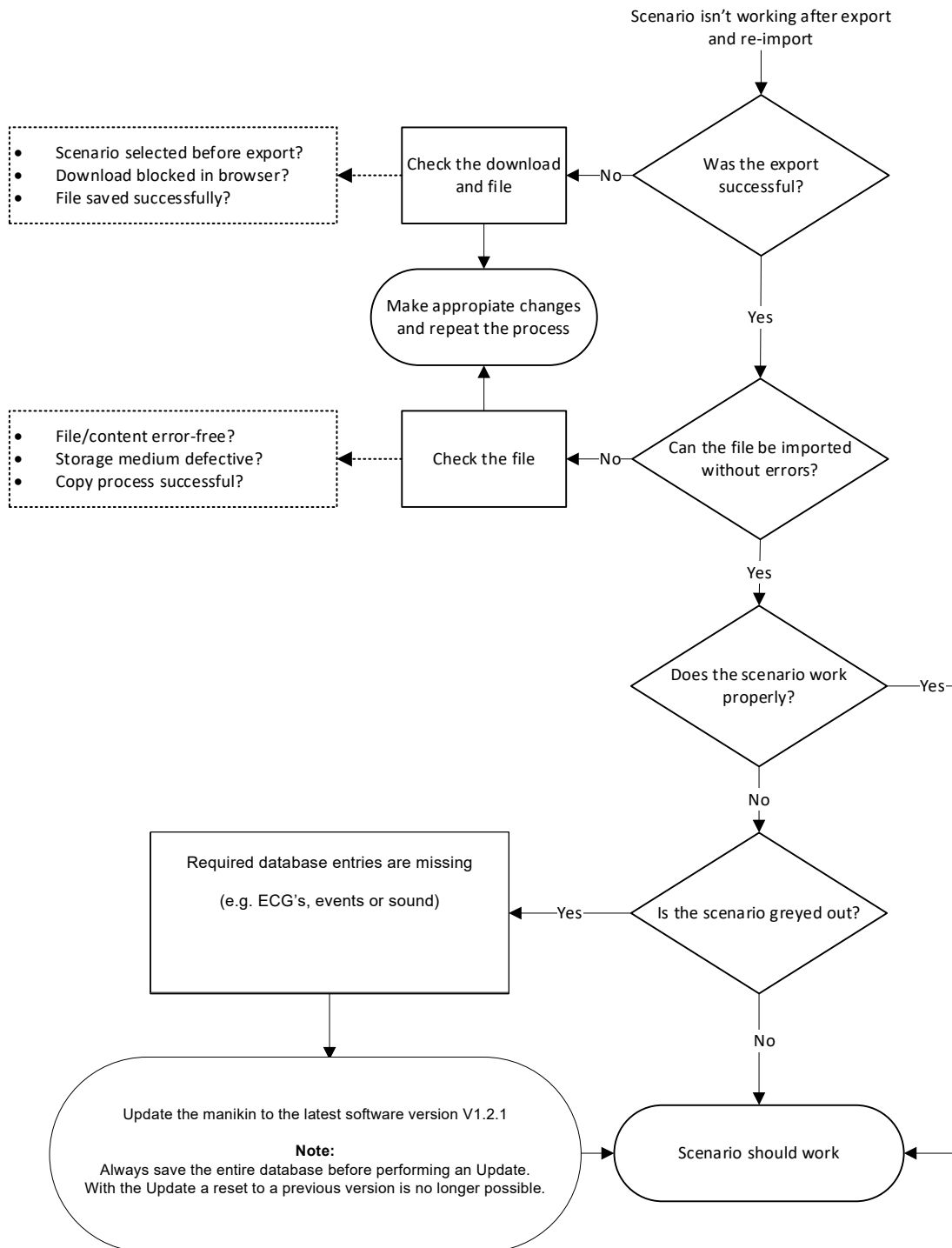
9.9 Scenario: Default sound of selected ECG cannot be changed



9.10 Scenario is not working after external creation (CSV-file)

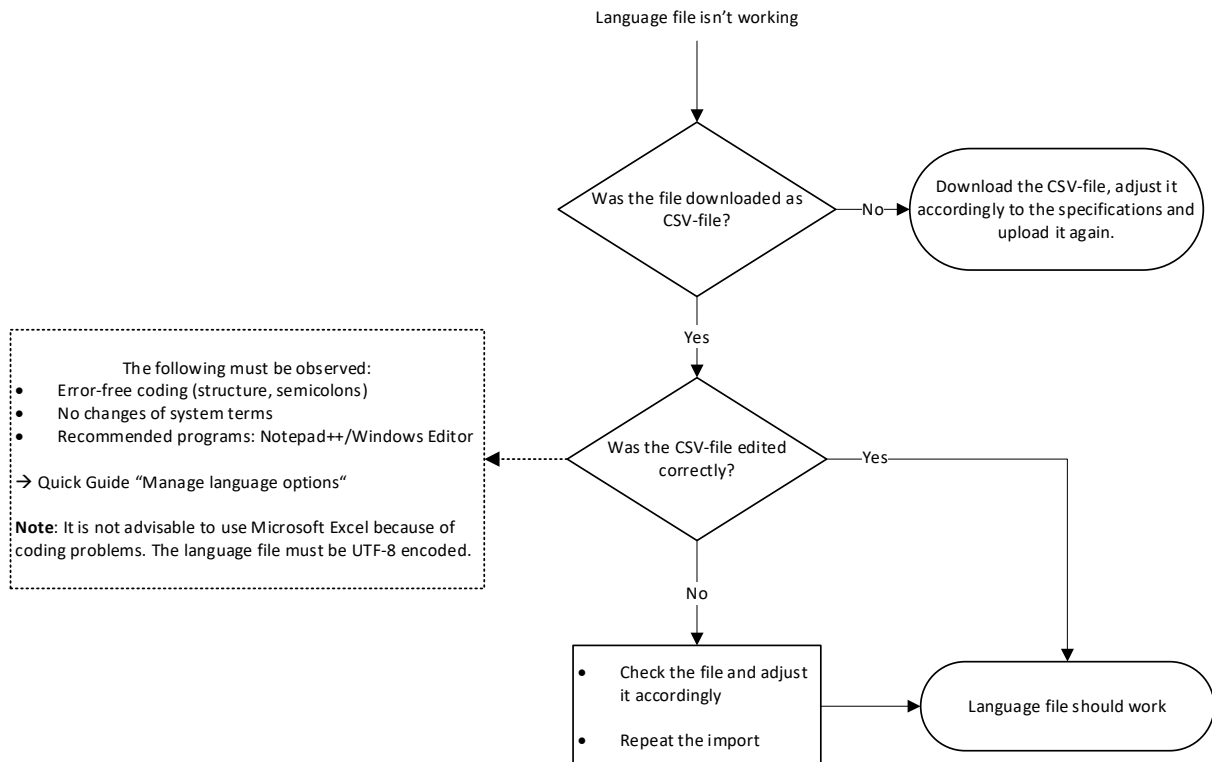


9.11 Scenario is not working after export and re-import

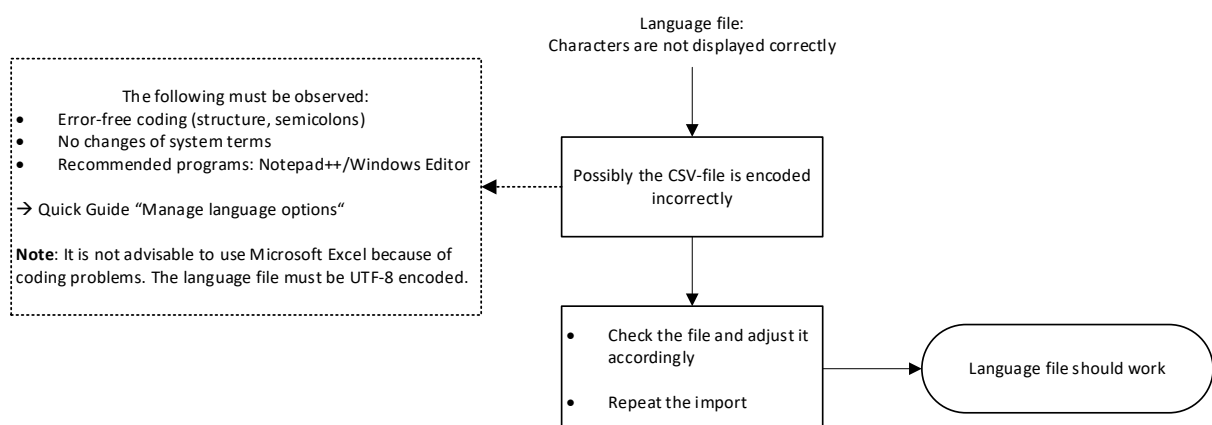


10. Manikin configuration (Ambu.login/config)

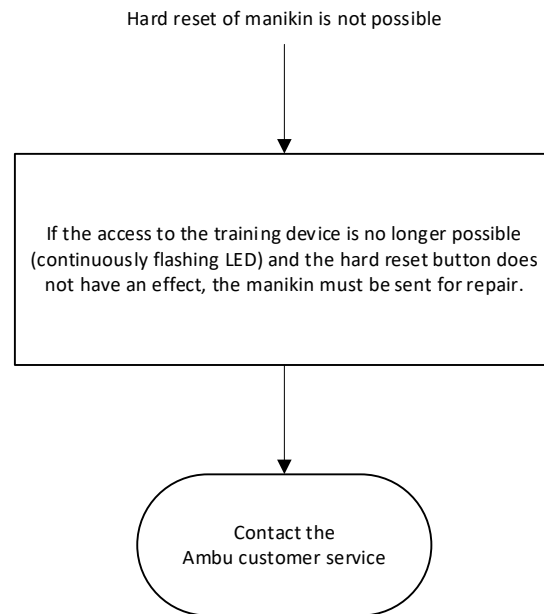
10.1 Language file is not working



10.2 Language file: Characters are not displayed correctly



10.3 Hard reset of manikin is not possible



Ambu A/S

Baltorpbakken 13
DK - 2750 Ballerup
Denmark
Tel. +45 7225 2000
Fax. +45 7225 2050
www.ambu.com