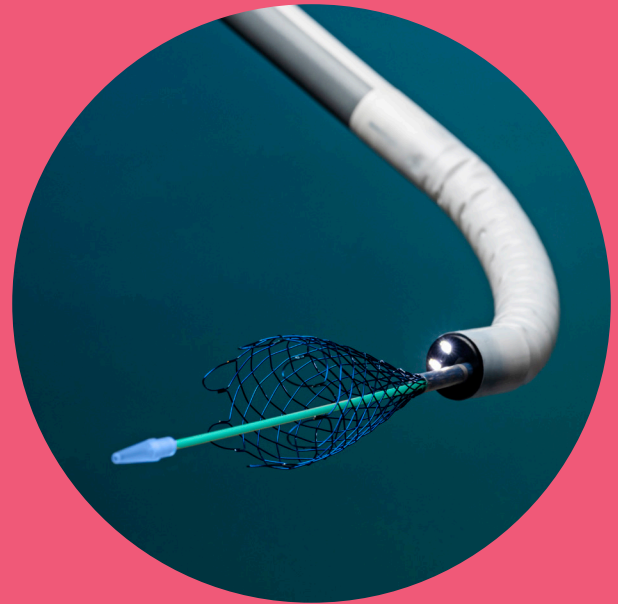


# Ambu

## aScope™ Gastro Large

### The Power To Perform When You Need It Most

90% improved suction with our  
4.2 mm channel\*



#### DATASHEET

The Ambu® aScope™ Gastro Large is the world's first single-use therapeutic gastroscopes. Designed with purpose featuring a unique 4.2 mm working channel.

#### KEY BENEFITS

4.2 mm working channel provides superior suction performance for critical care EGD

Access a broader range of tools for emergency cases like acute upper GI bleeding

Single-use convenience offers unmatched efficiency for 24/7 out-of-suite EGD

Bioplastic materials elevate standards for sustainability



### WORLD'S FIRST

endoscope with  
bioplastic handle

\*Data on file

## SPECIFICATIONS

### Optical System

Field of view	140°
Depth of field	3 - 100 mm / 0.12 - 3.94"
Illumination method	Dual LEDs
Image enhancement	Yes (Advanced Red Contrast)

### Insertion Tube

Distal tip outer diameter	11.5 mm / 0.45" / 34.5 Fr
Working length	103 cm / 40.6"

### Bending Section

Angulation (Up/Down/Left/Right)	210° / 120° / 100° / 100°
---------------------------------	---------------------------

### Endoscope Channels

Working channel inner diameter	4.2 mm / 0.17" / 12.6 Fr
Auxiliary Water Jet Channel	Yes

### Weight

Weight	599 g / 1.32 lb / 21.13 oz
--------	----------------------------

### Sterilization

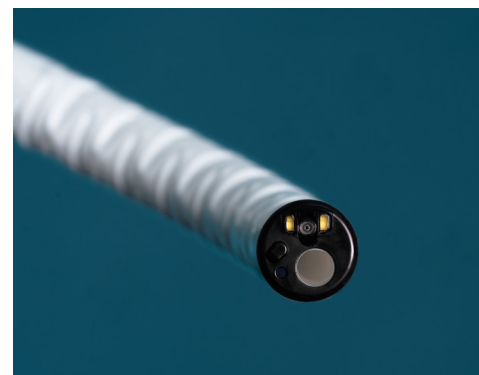
Sterilization	ETO
---------------	-----

### Storage and Transportation

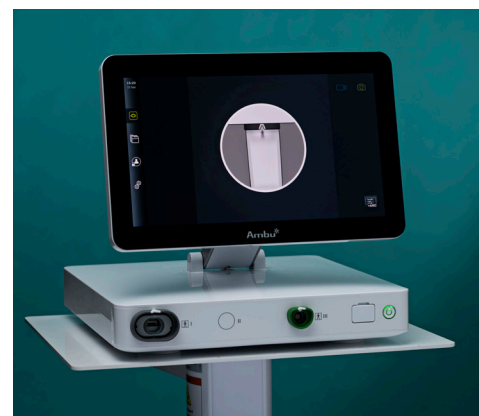
Transportation temperature	-10 - 55 °C / 14 - 131 °F
Storage temperature	10 - 25 °C / 50 - 77 °F
Relative humidity	10 - 95 %
Atmospheric pressure	50 - 106 kPa / 7.3 - 15 psi

## ORDERING SPECIFICATIONS

	Item no.	Quantity
aScope Gastro Large	582101000 (US version)	6
aBox 2	505001000	1



Unique 4.2 mm working channel



The compatible Ambu® aBox™ 2 endoscopy system

#### Improved angulation

210° retroflexion and 120° downward angulation

#### Distal tip

Dual LEDs and high-resolution imaging for a clear visualization of anatomical structures



#### Plug-and-play connectivity

Lightweight endoscope connector compatible with standard ancillary devices and tube sets

#### 4.2 mm working channel

Unique 4.2 mm working channel for powerful suction and access to a wide variety of endoscopic tools

#### Functional handle design

Lightweight rippled-surface handle, dual-function buttons

#### Bioplastic

World's first gastroscope with bioplastic handle derived from recycled food waste

# Ambu

Ambu, Inc.  
6721 Columbia Gateway Drive  
Suite 200  
Columbia, MD 21046  
Tel. 800 262 8462  
Fax 800 262 8673  
ambuUSA.com

Questions? Contact your Ambu representative at **800-262-8462** or visit [ambuUSA.com](http://ambuUSA.com)